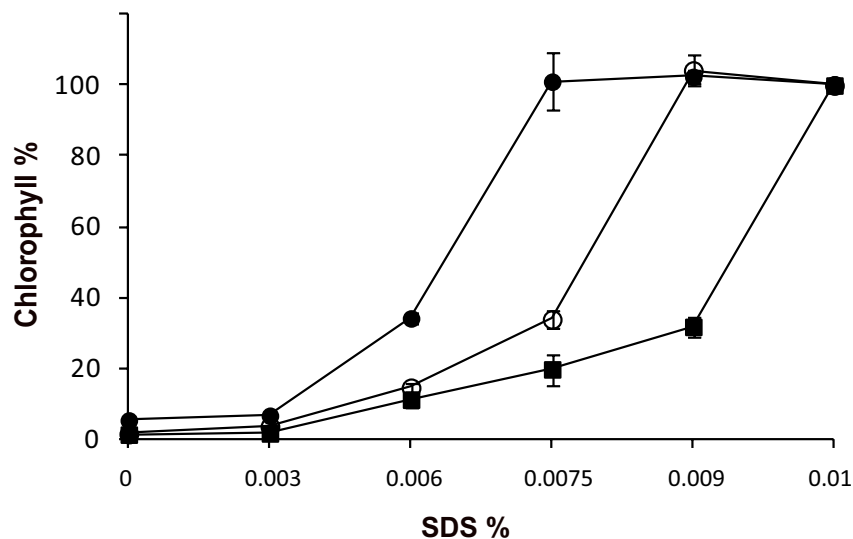
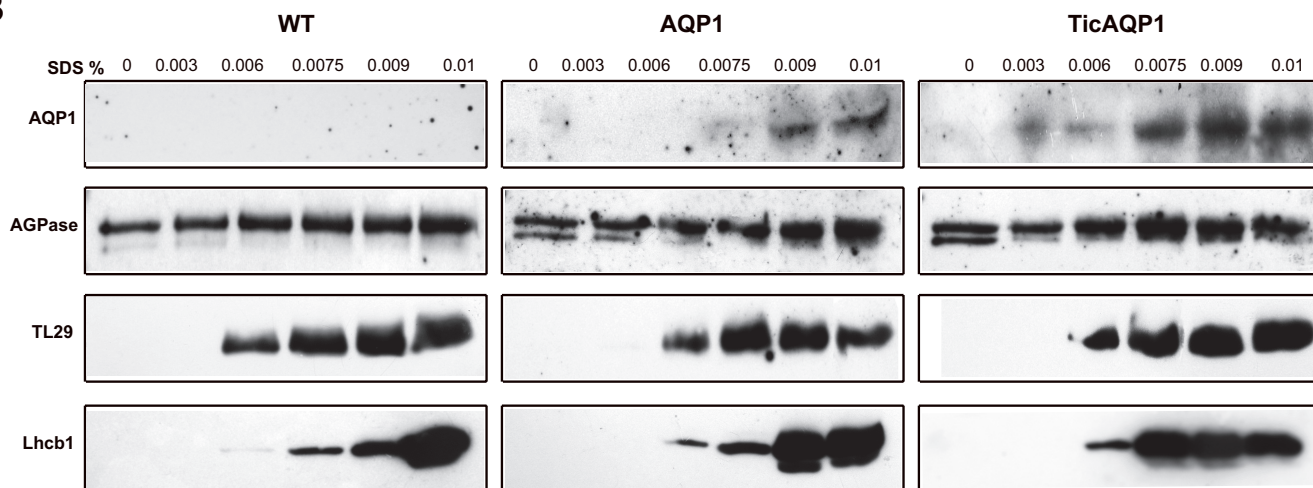
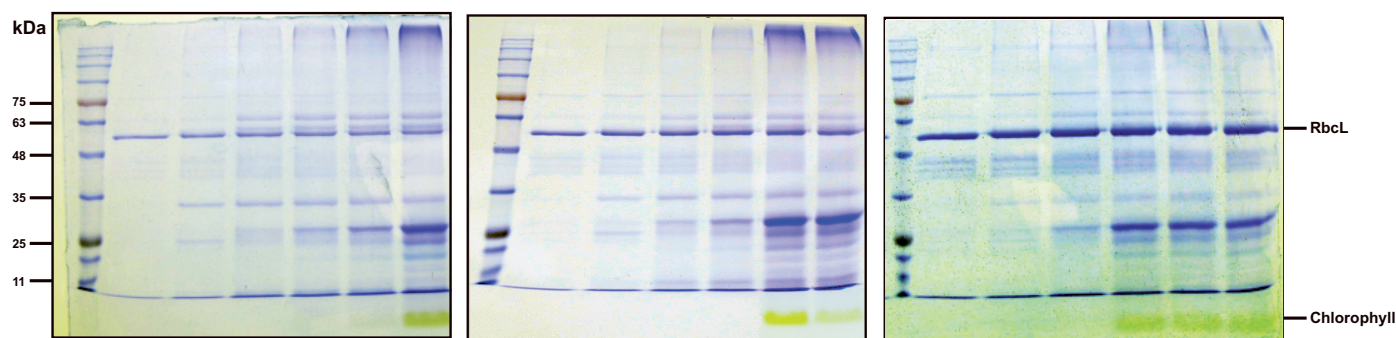


Supplementary Figure S1. Relationship between Φ_{PSII} vs Φ_{CO_2} used to correct ETR. Values of the slope for each genotype are indicated in the legend. The $\alpha^*\beta$ factor was calculated as $4/\text{slope}$, for each single plant measured (see M&M, Valentini *et al.*, 1995 ; Pons *et al.*, 2009 and Martins *et al.*, 2013).

A**B****C**

Supplementary Figure S2. Membrane disruption of wild-type (WT), AQP1 and TicAQP1 chloroplasts treated with increasing concentrations of SDS. (A) Chlorophyll released after a 10 min treatment with the corresponding SDS concentration. WT (square), AQP1 (open circle) and TicAQP1 (filled circle) (n=3). (B) Immunoblot analysis with antibodies against AQP1, AGPase, TL29 (thylakoid lumen protein) and Lhcb1 (thylakoid membrane protein) of supernatants after each treatment. (C) Coomassie blue-stained SDS-PAGE of supernatants from each fraction.