

## ORIGINAL ARTICLE

# Prevalence and incidence of Alzheimer's disease in Europe: A meta-analysis<sup>☆,☆☆</sup>



H. Niu<sup>a,\*</sup>, I. Álvarez-Álvarez<sup>a</sup>, F. Guillén-Grima<sup>a,b,c</sup>, I. Aguinaga-Ontoso<sup>a</sup>

<sup>a</sup> Departamento de Ciencias de la Salud, Universidad Pública de Navarra, Pamplona, Navarra, Spain

<sup>b</sup> Instituto de Investigación Sanitaria de Navarra (IDISNA), Pamplona, Navarra, Spain

<sup>c</sup> Medicina Preventiva, Clínica Universidad de Navarra, Pamplona, Navarra, Spain

Received 14 August 2015; accepted 27 February 2016

Available online 23 August 2017

### KEYWORDS

Alzheimer's disease;  
Epidemiology;  
Prevalence;  
Incidence;  
Europe;  
Meta-analysis

### Abstract

**Background:** A disease of unknown aetiology, Alzheimer's disease (AD) is the most common type of dementia. As the elderly population grows worldwide, the number of patients with AD also increases rapidly. The aim of this meta-analysis is to evaluate the prevalence and incidence of AD in Europe.

**Methodology:** We conducted a literature search on Medline, Scopus, and CINAHL Complete using the keywords "Alzheimer", "Alzheimer's disease", and "AD" combined with "prevalence", "incidence", and "epidemiology". A Bayesian random effects model with 95% credible intervals was used. The  $I^2$  statistic was applied to assess heterogeneity.

**Results:** The prevalence of Alzheimer's disease in Europe was estimated at 5.05% (95% CI, 4.73-5.39). The prevalence in men was 3.31% (95% CI, 2.85-3.80) and in women, 7.13% (95% CI, 6.56-7.72), and increased with age.

The incidence of Alzheimer's disease in Europe was 11.08 per 1000 person-years (95% CI, 10.30-11.89). Broken down by sex, it was 7.02 per 1000 person-years (95% CI, 6.06-8.05) in men and 13.25 per 1000 person-years (95% CI, 12.05-14.51) in women; again these rates increased with age.

**Conclusions:** The results of our meta-analysis allow a better grasp of the impact of this disease in Europe.

© 2015 Sociedad Española de Neurología. Published by Elsevier España, S.L.U. This is an open access article under the CC BY-NC-ND license (<http://creativecommons.org/licenses/by-nc-nd/4.0/>).

<sup>☆</sup> Please cite this article as: Niu H, Álvarez-Álvarez I, Guillén-Grima F, Aguinaga-Ontoso I. Prevalencia e incidencia de la enfermedad de Alzheimer en Europa: metaanálisis. Neurología. 2017;32:523–532.

<sup>☆☆</sup> This study has not been presented at the SEN's Annual Meeting or at any other conferences or congresses.

\* Corresponding author.

E-mail address: [niu.74609@e.unavarra.es](mailto:niu.74609@e.unavarra.es) (H. Niu).

**PALABRAS CLAVE**

Enfermedad de Alzheimer;  
Epidemiología;  
Prevalencia;  
Incidencia;  
Europa;  
Metaanálisis

**Prevalencia e incidencia de la enfermedad de Alzheimer en Europa: metaanálisis****Resumen**

**Introducción:** La enfermedad de Alzheimer es el principal tipo de demencia y una enfermedad de etiología desconocida. Con el aumento de la población anciana mundial, el número de pacientes con enfermedad de Alzheimer muestra una tendencia de crecimiento rápido. El objetivo de este metaanálisis es evaluar la prevalencia e incidencia de la enfermedad de Alzheimer en Europa.

**Metodología:** La búsqueda de artículos se realizó en las bases de datos Medline, Scopus y CINAHL Complete utilizando las palabras claves «Alzheimer», «Alzheimer's disease» y «AD», combinadas con «prevalence», «incidence» y «epidemiology». Se utilizó el modelo bayesiano de efectos aleatorios, mostrando intervalos de credibilidad del 95%. Para estimar la heterogeneidad se usó el estadístico  $I^2$ .

**Resultados:** La prevalencia de enfermedad de Alzheimer en Europa fue 5,05% (IC del 95%, 4,73-5,39). La prevalencia por sexo en los hombres y las mujeres fue 3,31% (IC del 95%, 2,85-3,80) y 7,13% (IC del 95%, 6,56-7,72), respectivamente, y se encontró una tendencia creciente por grupos de edad.

La incidencia de enfermedad de Alzheimer en Europa fue 11,08 por 1.000 personas-año (IC del 95%, 10,30-11,89), siendo en los hombres y las mujeres de 7,02 por 1.000 personas-año (IC del 95%, 6,06-8,05) y 13,25 por 1.000 personas-año (IC del 95%, 12,05-14,51), respectivamente, con igual tendencia creciente con el aumento de la edad.

**Conclusiones:** Los resultados del metaanálisis permiten una mejor comprensión de la enfermedad y su impacto en Europa.

© 2015 Sociedad Española de Neurología. Publicado por Elsevier España, S.L.U. Este es un artículo Open Access bajo la licencia CC BY-NC-ND (<http://creativecommons.org/licenses/by-nc-nd/4.0/>).

**Introduction**

The World Health Organization defines Alzheimer disease (AD) as a neurodegenerative disease of unknown aetiology, characterised by progressive memory and cognitive impairment<sup>1</sup> which accounts for 50% to 75% of all cases of dementia.<sup>2</sup> According to global statistical data from the Global Burden of Disease Study, AD was one of the fastest-rising diseases among the leading 50 causes of global years of life lost between 1990 and 2013.<sup>3</sup>

Multiple risk factors have been identified, including female sex,<sup>4</sup> age,<sup>5</sup> low education level,<sup>5,6</sup> the *APOE*\**E4* allele,<sup>7,8</sup> smoking,<sup>9</sup> obesity,<sup>10,11</sup> and diabetes mellitus.<sup>12</sup>

A collaborative study including the results of several European population-based cohorts conducted in the 1990s found a prevalence of 4.4% in people older than 65.<sup>13</sup> Rapid population ageing has resulted in an increasing number of patients with AD. In 2006, a total of 26.6 million patients had AD worldwide, with forecasts suggesting that this number will reach 106.8 million by 2050, with 16.51 million patients in Europe.<sup>14</sup> More recent studies have confirmed this upward trend in the incidence of dementia, predicting a 87% increase in Europe for the 2010-2050 period.<sup>15</sup>

A deeper understanding of the epidemiology of AD is therefore important for early prevention, as it helps health-care authorities and reduces the impact of the disease on the elderly. This meta-analysis aims to analyse the available literature and estimate the prevalence and incidence of AD in Europe.

**Material and methods****Search strategy and selection criteria**

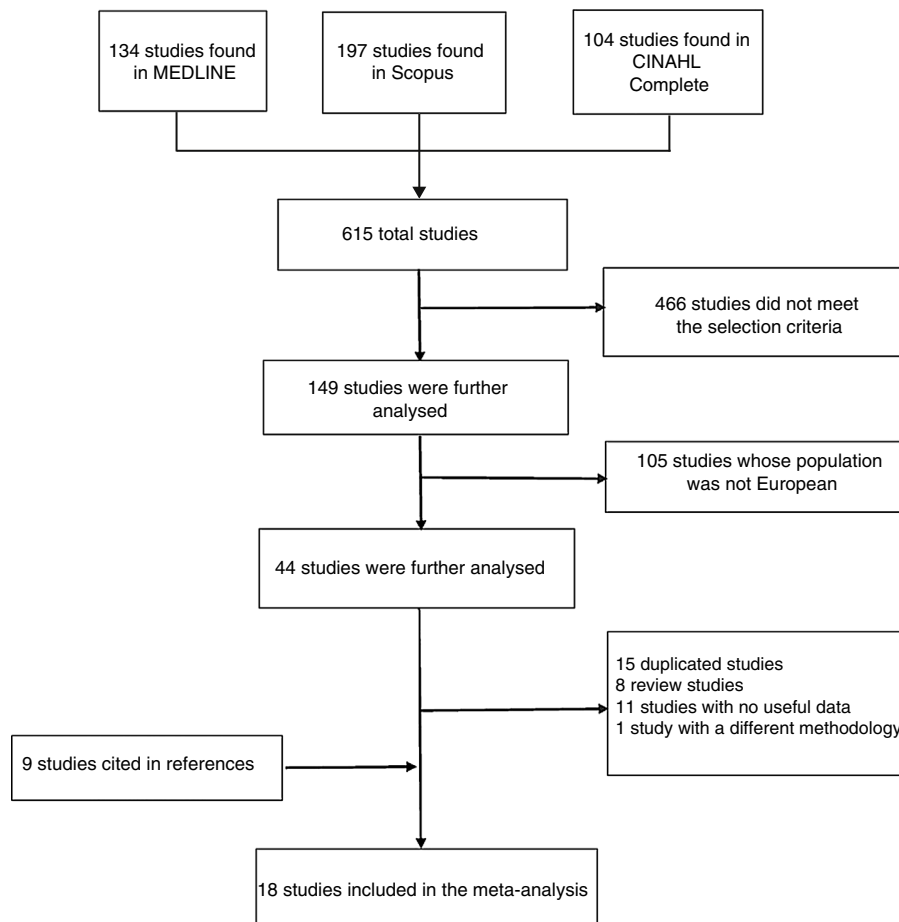
We searched the MEDLINE, SCOPUS, and CINAHL Complete databases for articles published between 1 January 1995 and 31 March 2015 and written in English, Spanish, French, Italian, or Portuguese.

We searched by title using the following keywords: "Alzheimer", "Alzheimer's disease", and "AD", combined with "prevalence", "incidence", and "epidemiology". A total of 615 articles were gathered. Additionally, we reviewed the references cited by the selected articles to identify additional studies meeting our inclusion criteria. Two researchers (H.N. and I.A.A.) searched for and assessed the articles; any discrepancies were solved by consensus.

Our meta-analysis included all observational studies fulfilling the following criteria: 1) original articles; 2) including European populations; 3) participants were men and women older than 50; 4) providing original data on prevalence and/or incidence; 5) describing diagnosis of AD, and 6) available in full text. Review articles, meta-analyses, and studies not addressing the epidemiology of AD were excluded.

**Data extraction**

Data were extracted by 2 researchers (H.N. and I.A.A.) and discrepancies were resolved through consultation with a



**Figure 1** Flow chart displaying the study selection process.

third researcher (F.G.G.). The meta-analysis included the following data from each article: 1) surname of the first author, year of publication, country of the study population; 2) demographic characteristics (number of participants, age range); 3) mean follow-up time; 4) number of patients with AD used to calculate the prevalence; 5) patients with AD and person-years at risk used to calculate the incidence.

### Quantitative analysis (meta-analysis)

Separate meta-analyses were conducted for prevalence and incidence. We used Fast\*Pro software and a Bayesian random-effects model with a 95% credible interval (95% CI). Bayesian credible intervals are different from frequentist confidence intervals: a 95% credible interval indicates that the probability that the true value lies within the interval is 95% according to the data observed and prior belief, whereas a 95% confidence interval indicates that 95% of the intervals would include the true value if numerous samples were taken. We conducted sensitivity analyses, replicating the results after excluding one study to examine the robustness of the analysis and the influence of the excluded study.

Heterogeneity was assessed with  $I^2$ , a statistic that estimates the percentage of total variation due to heterogeneity across studies.<sup>16</sup>

Brayne et al.<sup>19</sup> and Andersen et al.<sup>27</sup> used patient and person-years data from patients with minimal and greater severity AD, and very mild to severe AD, respectively. The study by Copeland et al.<sup>28</sup> calculated patient and person-years at risk based on data from women and men of all ages. We included the study by Tsolaki et al.<sup>26</sup> in the meta-analyses of the prevalence and incidence of AD.

### Results

The MEDLINE search yielded 314 articles; 239 articles were excluded for not meeting the selection criteria and the remaining 75 articles required further analysis. Of these, 48 were excluded because they did not include European populations. Of the remaining 27 studies, we excluded 7 review articles, 11 articles whose data were not useful, and one study with a different research methodology. Our meta-analysis included 8 articles from MEDLINE.

We found 197 articles in Scopus; 143 of these were excluded for not fulfilling the selection criteria, and an additional 39 articles were excluded because their populations were not European. Of the remaining 15 studies, we excluded one review article, 4 articles whose data were not useful, and one study with a different research

**Table 1** Characteristics of the included studies.

| Study  | Population | Screening test   | Diagnostic criteria for dementia/AD | Neuropathological confirmation |
|--|------------|------------------|-------------------------------------|--------------------------------|
| Letenneur et al. <sup>17</sup> (1994, France)        | Com        | MMSE, BVRT, WPA  | DSM-III-R/NINCDS-ADRDA              | Yes                            |
| Manubens et al. <sup>18</sup> (1995, Spain)          | Com/Ins    | CAMDEX           | DSM-III-R/NINCDS-ADRDA              | No                             |
| Brayne et al. <sup>19</sup> (1995, United Kingdom)   | Com        | MMSE             | CAMDEX                              | No                             |
| Ott et al. <sup>20</sup> (1995, the Netherlands)     | Com/Ins    | MMSE, GMS        | DSM-III-R/NINCDS-ADRDA              | Yes                            |
| Prencipe et al. <sup>21</sup> (1996, Italy)          | Com        | MMSE, MSQ        | DSM-III/NINCDS-ADRDA                | Yes                            |
| Aearsson et al. <sup>22</sup> (1996, Sweden)         | Com/Ins    | CPRS, MMSE       | DSM-III-R/NINCDS-ADRDA              | Yes                            |
| Ferini-Strambi et al. <sup>23</sup> (1997, Italy)    | Com/Ins    | AMT              | NINDS-AIREN/NINCDS-ADRDA            | No                             |
| Obadia et al. <sup>24</sup> (1997, France)           | Com/Ins    | MMSE             | DSM-III-R/NINCDS-ADRDA              | No                             |
| Salamon et al. <sup>25</sup> (1999, France)          | Com/Ins    | MMSE, BVRT, WPA  | DSM-III-R/NINCDS-ADRDA              | Yes                            |
| Tsolaki et al. <sup>26</sup> (1999, Greece)          | Com        | MMSE, CAMDEX     | DSM-III-R/NINCDS-ADRDA              | Yes                            |
| Andersen et al. <sup>27</sup> (1999, Denmark)        | Com/Ins    | CAMDEX           | DSM-III-R/NINCDS-ADRDA              | Yes                            |
| Copeland et al. <sup>28</sup> (1999, United Kingdom) | Com/Ins    | GMS, MMSE        | GMS-AGECAT                          | Yes                            |
| Di Carlo et al. <sup>29</sup> (2002, Italy)          | Com/Ins    | MMSE             | DSM-III-R/NINCDS-ADRDA              | No                             |
| López-Pousa et al. <sup>30</sup> (2004, Spain)       | Com        | MMSE, RCDI       | CAMDEX, DSM-III-R                   | No                             |
| Ravaglia et al. <sup>31</sup> (2005, Italy)          | Com        | GMS, MMSE        | DSM-IV/NINCDS-ADRDA                 | Yes                            |
| Bermejo-Pareja et al. <sup>32</sup> (2008, Spain)    | Com/Ins    | MMSE, FAQ        | DSM-IV/NINCDS-ADRDA                 | No                             |
| Lobo et al. <sup>33</sup> (2011, Spain)              | Com        | MMSE, GMS, HAS   | DSM-IV/NINCDS-ADRDA                 | No                             |
| Tola-Arribas et al. <sup>34</sup> (2013, Spain)      | Com/Ins    | 7MS, IQCODE, KDQ | DSM-IV/NINCDS-ADRDA                 | Yes                            |

AGECAT: Automated Geriatric Examination for Computer Assisted Taxonomy; AMT: Abbreviated Mental Test; BVRT: Benton Visual Retention Test; CAMDEX: Cambridge Mental Disorders of the Elderly Examination; Com: community-living patients; CPRS: Comprehensive Psychopathological Rating Scale; DSM: Diagnostic and Statistical Manual of Mental Disorders; FAQ: Functional Activities Questionnaire; GDS: Geriatric Depression Scale; GMS: Geriatric Mental State; HAS: History and Aetiology Schedule; Ins: institutionalised patients; IQCODE: Informant Questionnaire on Cognitive Decline in the Elderly; KDQ: Kawas Dementia Questionnaire; MMSE: Mini-Mental State Examination; MSQ: Mental Status Questionnaire; NINCDS-ADRDA: National Institute of Neurological and Communicative Disorders and Stroke-Alzheimer's Disease and Related Disorders Association; NINDS-AIREN: National Institute of Neurological Disorders and Stroke-Association Internationale pour la Recherche et l'Enseignement en Neurosciences; RCDI: Retrospective Collateral Dementia Interview; WPA: Wechsler's Paired-Associates; 7MS: 7-Minute Screen Neurocognitive Battery.

Sources: Folstein et al.,<sup>36</sup> Benton,<sup>37</sup> Wechsler,<sup>38</sup> Roth et al.,<sup>39</sup> Copeland et al.,<sup>40</sup> Copeland et al.,<sup>41</sup> Kahn et al.,<sup>42</sup> Asberg et al.,<sup>43</sup> Rocca et al.,<sup>44</sup> Davis et al.,<sup>45</sup> Yesavage et al.,<sup>46</sup> Pfeffer et al.,<sup>47</sup> Dewey et al.,<sup>48</sup> Solomon et al.,<sup>49</sup> Jorm and Korten,<sup>50</sup> Kawas et al.,<sup>51</sup> American Psychiatric Association,<sup>52</sup> American Psychiatric Association,<sup>53</sup> McKhann et al.,<sup>54</sup> and Roman et al.<sup>55</sup>

methodology. The remaining 9 articles met all the criteria. However, 8 of these were duplicated and were therefore excluded. As a result, only one article from Scopus was included in our meta-analysis.

The CINAHL Complete literature search yielded 104 articles; 84 of these did not meet the criteria and 18 did not include European populations. Two articles required further analysis: one of them was a review article and the other

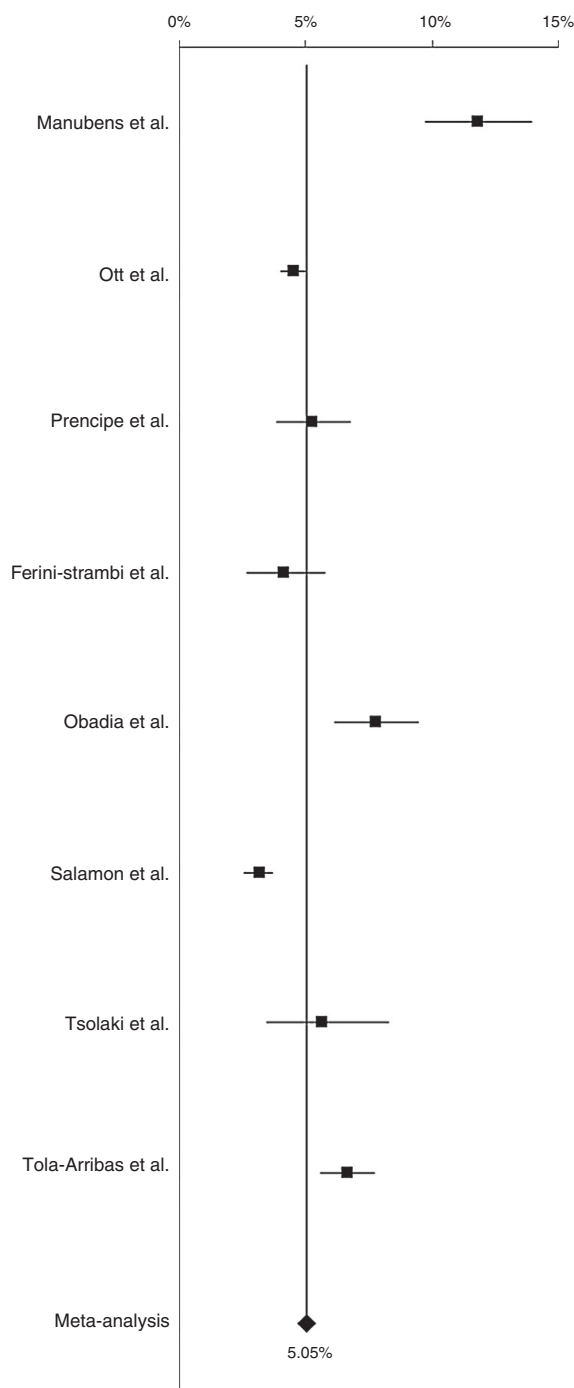
**Table 2** Meta-analysis of prevalence of Alzheimer disease in Europe, broken down by sex and age group.

| Type of study         | Age range | Patients with AD (n) | Men                  | Women                | 65-74 years          | 75-84 years          | ≥85 years               | ≤79 years            | ≥80 years               |
|-----------------------|-----------|----------------------|----------------------|----------------------|----------------------|----------------------|-------------------------|----------------------|-------------------------|
| Manubens et al.       | 70-91     | 119 (1019)           | 41 (562)             | 78 (565)             | 1 (146)              | 52 (613)             | 66 (368)                | 24 (457)             | 95 (670)                |
| Ott et al.            | 55-106    | 339 (7528)           | 76 (2939)            | 263 (4589)           | 24 (2563)            | 121 (1643)           | 190 (709)               | —                    | —                       |
| Prencipe et al.       | >64       | 50 (968)             | 21 (418)             | 27 (550)             | 7 (544)              | 32 (359)             | 11 (65)                 | —                    | —                       |
| Ferini-Strambi et al. | >59       | 27 (673)             | 7 (254)              | 20 (419)             | —                    | —                    | —                       | 11 (573)             | 16 (100)                |
| Obadia et al.         | ≥70       | 82 (1068)            | 16 (432)             | 66 (636)             | —                    | —                    | —                       | 28 (679)             | 54 (389)                |
| Salamon et al.        | ≥65       | 128 (4123)           | —                    | —                    | —                    | —                    | —                       | —                    | —                       |
| Tsolaki et al.        | ≥70       | 20 (365)             | 4 (159)              | 16 (206)             | 2 (118)              | 12 (206)             | 6 (41)                  | 10 (230)             | 10 (135)                |
| Tola-Arribas et al.   | ≥65       | 143 (2170)           | 26 (933)             | 117 (1237)           | 10 (1024)            | 63 (813)             | 70 (333)                | 37 (1473)            | 106 (697)               |
| Meta-analysis         |           | 5.05%<br>(4.73-5.39) | 3.31%<br>(2.85-3.80) | 7.13%<br>(6.56-7.72) | 0.97%<br>(0.70-1.28) | 7.66%<br>(6.79-8.59) | 22.53%<br>(20.20-24.08) | 3.18%<br>(2.61-3.81) | 14.04%<br>(12.44-15.73) |

**Table 3** Meta-analysis of incidence of Alzheimer disease in Europe, broken down by sex and age group (person-years at risk).

| Type of study         | Age range | Mean follow-up time (years) | Patients with AD (P-Y) | Men                 | Women                  | 65-74 years         | 75-84 years            | ≥85 years              |
|-----------------------|-----------|-----------------------------|------------------------|---------------------|------------------------|---------------------|------------------------|------------------------|
| Letteneur et al.      | ≥65       | 3                           | 59 (5136.5)            | 19 (1566.9)         | 40 (2321.3)            | 4 (2628.6)          | 30 (2068.7)            | 25 (518.3)             |
| Brayne et al.         | ≥75       | 2.4                         | 65 (2361)              | 19 (855)            | 46 (1509)              | —                   | 44 (2045)              | 21 (280)               |
| Aevarsson et al.      | 85-88     | 3                           | 27 (699.2)             | 5 (212.2)           | 22 (487)               | —                   | —                      | 27 (699.2)             |
| Andersen et al.       | 65-84     | 2.1                         | 102 (4872)             | —                   | —                      | 33 (3303)           | 69 (1569)              | —                      |
| Copeland et al.       | ≥65       | 4                           | 73 (7287)              | 23 (3505)           | 50 (3782)              | 4 (2664)            | 12 (2499)              | 57 (2124)              |
| Tsolaki et al.        | ≥70       | 2                           | 26 (496)               | 6 (214)             | 20 (282)               | 1 (66)              | 16 (352)               | 9 (78)                 |
| Di Carlo et al.       | 65-84     | 3.8                         | 67 (9524.8)            | 25 (5034.7)         | 42 (4490.1)            | 19 (5731.7)         | 48 (3793.1)            | —                      |
| López-Pousa et al.    | ≥75       | 4.3                         | 52 (4825)              | 13 (1994)           | 39 (2838)              | —                   | 30 (3739)              | 22 (1077)              |
| Ravaglia et al.       | ≥65       | 3.8                         | 72 (3044.4)            | 24 (1421.8)         | 48 (1622.6)            | 18 (1595)           | 33 (1172.2)            | 21 (277.2)             |
| Bermejo-Pareja et al. | ≥65       | 3.2                         | 115 (12 552)           | 35 (5355)           | 80 (7197)              | 18 (6452)           | 55 (4843)              | 42 (1257)              |
| Lobo et al.           | ≥55       | 4.5                         | 87 (16 025)            | 26 (7050)           | 61 (8975)              | 6 (6690)            | 19 (3461)              | 62 (1593)              |
| Meta-analysis         |           |                             | 11.08<br>(10.30-11.89) | 7.02<br>(6.06-8.05) | 13.25<br>(12.05-14.51) | 3.43<br>(2.79-4.14) | 13.78<br>(12.38-15.26) | 35.74<br>(31.70-40.03) |

P-Y: person-years at risk.



**Figure 2** Prevalence of Alzheimer disease.

followed an incompatible methodology. No studies from CINAHL Complete were therefore included in our meta-analysis.

After reading the included articles, we identified and added 9 new articles cited in their reference lists; our meta-analysis finally included a total of 18 original articles (Fig. 1). As an exception, we included the study by Letenieur et al.<sup>17</sup> for its importance as part of the EURODEM study.<sup>35</sup>

Study characteristics are listed in Table 1. Our selection of articles included 8 observational cross-sectional

studies, which were included in the meta-analysis of prevalence (Table 2), and 11 longitudinal or cohort studies, which were used for the meta-analysis of incidence (Table 3). The study by Tsolaki et al.<sup>26</sup> was used in both meta-analyses, given that it was cross-sectional and longitudinal.

The populations came from the following countries: Spain, the Netherlands, Italy, France, Greece, United Kingdom, Sweden, and Denmark. Sample size ranged from 288 to 7528 participants.

Prevalence of AD in Europe was 5.05% (95% CI, 4.73-5.39) (Fig. 2). After conducting a sensitivity analysis excluding the study by Manubens et al.<sup>18</sup>, prevalence was estimated at 4.66% (95% CI, 4.34-4.99). Prevalence of AD was 6.88% (95% CI, 6.19-7.61) in southern European countries (Spain, Italy, and Greece) and 4.31% (95% CI, 3.26-4.68) in northern European countries (France, the Netherlands).

Prevalence was 3.31% (95% CI, 2.85-3.80) in men and 7.13% (95% CI, 6.56-7.72) in women.

Prevalence of AD increased with age: 0.97%, 7.66%, and 22.53% for patients aged 65 to 74 years, 75 to 84 years, and 85 and older, respectively, and 3.18% and 14.04% for patients aged 79 and younger and those aged 80 and older, respectively (Table 2).

The heterogeneity analysis gave an  $I^2$  value of 42.42%, which indicates moderate heterogeneity. After the sensitivity analysis,  $I^2$  was 6.49%, indicating low heterogeneity;  $I^2$  values for southern and northern European countries were 28.9% and 57.40%, respectively.

Incidence of AD was 11.08 cases per 1000 person-years (95% CI, 10.30-11.89) (Fig. 3). Sensitivity analyses, which excluded only the article by Tsolaki et al.<sup>26</sup> obtained an incidence rate of 10.78 cases per 1000 person-years (95% CI, 10.0-11.58). After excluding only the article by Aevansson et al.<sup>22</sup>, incidence was estimated at 10.80 cases per 1000 person-years (95% CI, 10.02-11.60).

Incidence rates in southern European countries (Greece, Italy, and Spain) and northern European countries (France, United Kingdom, Sweden, and Denmark) were 8.97 cases per 1000 person-years (95% CI, 8.13-9.86) and 15.94 cases per 1000 person-years (95% CI, 14.25-17.72), respectively.

As with prevalence, incidence of AD was higher in women than in men: 13.25 cases per 1000 person-years (95% CI, 12.05-14.51) vs 7.02 cases per 1000 person-years (95% CI, 6.06-8.05).

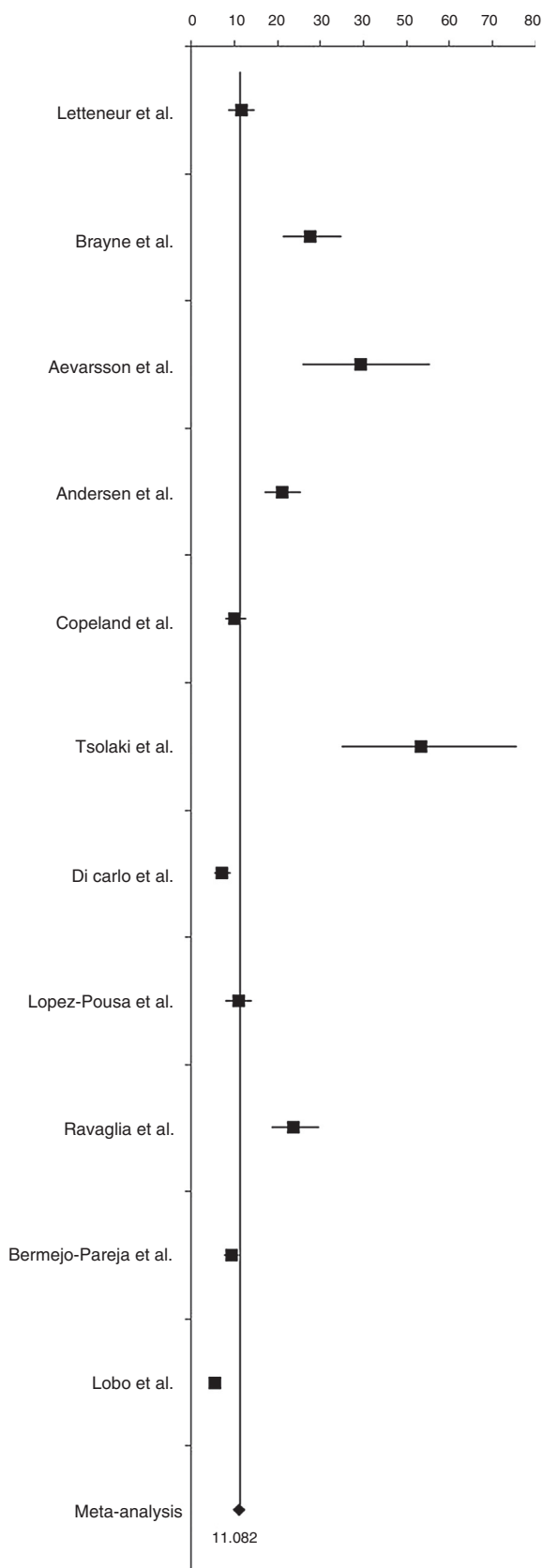
Incidence increased with age: 3.43, 13.78, and 35.74 cases per 1000 person-years for patients aged 65 to 74 years, 75 to 84 years, and 85 and older, respectively (Table 3).

Heterogeneity was found to be high ( $I^2 = 70.37%$ ). After excluding the study by Tsolaki et al.<sup>26</sup> and the study by Aevansson et al.<sup>22</sup> from the sensitivity analysis,  $I^2$  values were estimated at 63.66% and 68.16%, respectively. In both cases, heterogeneity was high.  $I^2$  values for the incidence of AD in southern and northern European countries were 78.80% and 48.15%, respectively.

## Discussion

Improvements in quality of life have led to an increase in life expectancy, which in turn involves increased incidence





**Figure 3** Incidence of Alzheimer disease.

of ageing-related diseases. This meta-analysis estimated prevalence and incidence rates of AD in Europe.

Studies conducted in Europe showed that the age-standardised prevalence of AD was lower in patients older than 65 (4.4%),<sup>13</sup> whereas incidence was estimated at 12.33 cases per 1000 person-years,<sup>35</sup> a higher rate than that found in our study. Recent studies found a significant decrease in the prevalence of dementia in the United Kingdom,<sup>56</sup> contrary to what we have observed in our study. In another study, disease prevalence was found to be stable and incidence displayed a non-significant decrease over time, which is in line with our findings.<sup>57</sup>

However, prevention of cardiovascular risk factors or higher education levels may have led to a significant decrease in the incidence of dementia in recent years.<sup>58</sup>

Our study showed a higher prevalence and incidence of AD in women, which is in line with other studies reporting a higher risk of AD in women,<sup>59,60</sup> especially in those with lower education levels.<sup>61</sup>

In Asia, a study carried out in China showed that prevalence of AD was 1.27% in patients aged 65 to 69 years and 18.54% in those aged 85 to 89 years for the year 2010; prevalence rates for all age groups were higher in 2010 than in 1990. Incidence of AD in the population aged 60 or older was 6.25 cases per 1000 person-years.<sup>62</sup>

In Japan, prevalence of AD in patients older than 65 was 7%,<sup>63</sup> with an incidence rate of 5.6 cases per 1000 person-years in the population older than 60.<sup>64</sup> In South Korea, however, prevalence in the population older than 65 was 5.7%.<sup>65</sup>

These findings show that recent improvements in quality of life and living conditions, especially in China and South Korea, have led to population ageing. This, in turn, has resulted in an increase in the prevalence of age-related diseases such as AD, whose prevalence is expected to increase in the future due to lifestyle and risk factors influencing the development of dementia at advanced ages.<sup>66</sup> Japan, on the other hand, has an older population, which may explain the higher prevalence of AD. The incidence rate is lower in Japan, however, which is probably due to the adoption of healthy lifestyle factors that may have a protective effect against AD, such as diet.<sup>67</sup>

In the United States, prevalence of AD in people older than 70 was estimated at 9.51%,<sup>68</sup> a higher rate than that found in our study, whereas the incidence rate was 14.26 cases per 1000 person-years.<sup>69</sup>

The American population is comparable to the European population both in the proportion of elderly people and in terms of living conditions; differences may therefore be due to differences in lifestyle: some authors have associated the Mediterranean diet with a lower risk of AD, for example.<sup>70,71</sup>

Heterogeneity was found to be medium in the meta-analysis of prevalence and low in the sensitivity analysis, after excluding one study. However, the heterogeneity of incidence was found to be high and remained high with slight changes when we excluded some studies.

One of the strengths of this study is its novelty; as far as we know, no meta-analyses have been conducted to date on the prevalence and incidence of AD in Europe. Furthermore, our study provides surprising results with a high level of scientific evidence. One of our study's main limitations is

the fact that we did not have access to more databases and were therefore unable to assess more articles.

In conclusion, we observed a slight increase in the prevalence of AD in Europe in the past few years and a decrease in incidence rates. These results bring our knowledge of the epidemiology of AD in Europe up to date. Similar studies and trend studies of AD in other regions of the world are also necessary.

## Funding

This study received no public or private funding.

## Conflicts of interest

The authors have no conflicts of interest to declare.

## References

- World Health Organization. The ICD-10 classification of mental and behavioural disorders: clinical descriptions and diagnostic guidelines. Geneva: World Health Organization; 1992.
- Prince M, Jackson J, editors. World Alzheimer Report 2009. London: Alzheimer's Disease International; 2009.
- GBD 2013 Mortality and Causes of Death Collaborators. Global, regional, and national age-sex specific all-cause and cause-specific mortality for 240 causes of death, 1990–2013: a systematic analysis for the Global Burden of Disease Study 2013. *Lancet*. 2015;385:117–71.
- Mielke MM, Vemuri P, Rocca WA. Clinical epidemiology of Alzheimer's disease: assessing sex and gender differences. *Clin Epidemiol*. 2014;6:37–48.
- Lee JY, Chang SM, Jang HS, Chang JS, Suh GH, Jung HY, et al. Illiteracy and the incidence of Alzheimer's disease in the Yonchon County survey, Korea. *Int Psychogeriatr*. 2008;20:976–85.
- Grünblatt E, Zehetmayer S, Bartl J, Löffler C, Wichart I, Rainer MK, et al. Genetic risk factors and markers for Alzheimer's disease and/or depression in the VITA study. *J Psychiatr Res*. 2009;43:298–308.
- Roses AD. Apolipoprotein E alleles as risk factors in Alzheimer's disease. *Annu Rev Med*. 1996;47:387–400.
- Sando SB, Melquist S, Cannon A, Hutton ML, Sletvold O, Saltvedt I, et al. APOE  $\epsilon$ 4 lowers age at onset and is a high risk factor for Alzheimer's disease. A case control study from central Norway. *BMC Neurol*. 2008;8:9.
- Cataldo JK, Prochaska JJ, Glantz SA. Cigarette smoking is a risk factor for Alzheimer's Disease: an analysis controlling for tobacco industry affiliation. *J Alzheimers Dis*. 2010;19:465–80.
- Beydoun MA, Beydoun HA, Wang Y. Obesity and central obesity as risk factors for incident dementia and its subtypes: a systematic review and meta-analysis. *Obes Rev*. 2008;9:204–18.
- Kivipelto M, Ngandu T, Fratiglioni L, Viitanen M, Kåreholt I, Winblad B, et al. Obesity and vascular risk factors at midlife and the risk of dementia and Alzheimer disease. *Arch Neurol*. 2005;62:1556–60.
- Arvanitakis Z, Wilson RS, Bienias JL, Evans DA, Bennett DA. Diabetes mellitus and risk of Alzheimer disease and decline in cognitive function. *Arch Neurol*. 2004;61:661–6.
- Lobo A, Launer LJ, Fratiglioni L, Andersen K, di Carlo A, Breteler MMB, et al. Prevalence of dementia and major subtypes in Europe: a collaborative study of population-based cohorts. *Neurology*. 2000;54 Suppl. 5:S4–9.
- Brookmeyer R, Johnson E, Ziegler-Graham K, Arrighi HM. Forecasting the global burden of Alzheimer's disease. *Alzheimers Dement*. 2007;3:186–91.
- Prince M, Bryce R, Albanese E, Wimo A, Ribeiro W, Ferri CP. The global prevalence of dementia: a systematic review and metaanalysis. *Alzheimers Dement*. 2013;9:63–75.
- Higgins JP, Thompson SG, Deeks JJ, Altman DG. Measuring inconsistency in meta-analyses. *BMJ*. 2003;327:557–60.
- Letenneur L, Commenges D, Dartigues JF, Barberger-Gateau P. Incidence of dementia and Alzheimer's disease in elderly community residents of south-western France. *Int J Epidemiol*. 1994;23:1256–61.
- Manubens JM, Martinez-Lage JM, Lacruz F, Muruzabal J, Larumbe R, Guarch C, et al. Prevalence of Alzheimer's disease and other dementing disorders in Pamplona: Spain. *Neuroepidemiology*. 1995;14:155–64.
- Brayne C, Gill C, Huppert FA, Barkley C, Gehlhaar E, Girling DM, et al. Incidence of clinically diagnosed subtypes of dementia in an elderly population. Cambridge Project for Later Life. *Br J Psychiatry*. 1995;167:255–62.
- Ott A, Breteler MMB, Van Harskamp F, Claus JJ, Van der Cammen TJM, Grobbee DE, et al. Prevalence of Alzheimer's disease and vascular dementia: association with education. The Rotterdam study. *BMJ*. 1995;310:970–3.
- Prencipe M, Casini AR, Ferretti C, Lattanzio MT, Fiorelli M, Culasso F. Prevalence of dementia in an elderly rural population: effects of age, sex, and education. *J Neurol Neurosurg Psychiatry*. 1996;60:628–33.
- Aearsson O, Skoog I. A population-based study on the incidence of dementia disorders between 85 and 88 years of age. *J Am Geriatr Soc*. 1996;44:1455–60.
- Ferini-Strambi L, Marcone A, Garancini P, Danelon F, Zamboni M, Massucci P, et al. Dementing disorders in north Italy: prevalence study in Vescovato, Cremona Province. *Eur J Epidemiol*. 1997;13:201–4.
- Obadia Y, Rotily M, Degrand-Guillaud A, Guelain J, Ceccaldi M, Severo C, et al. The PREMAP Study: prevalence and risk factors of dementia and clinically diagnosed Alzheimer's disease in Provence, France. *Eur J Epidemiol*. 1997;13:247–53.
- Salamon R, Dartigues JF. Epidémiologie de la maladie d'Alzheimer: L'expérience Paquid. *Bull Acad Natl Med*. 1999;183:129–42.
- Tsolaki M, Fountoulakis C, Pavlopoulos I, Chatzi E, Kazis A. Prevalence and incidence of Alzheimer's disease and other dementing disorders in Pylea: Greece. *Am J Alzheimers Dis Other Dement*. 1999;14:138–48.
- Andersen K, Nielsen H, Lolk A, Andersen J, Becker I, Kragh-Sørensen P. Incidence of very mild to severe dementia and Alzheimer's disease in Denmark. The Odense Study. *Neurology*. 1999;52:85–90.
- Copeland JRM, McCracken CFM, Dewey ME, Wilson KCM, Doran M, Gilmore C, et al. Undifferentiated dementia, Alzheimer's disease and vascular dementia: age-and gender-related incidence in Liverpool. The MRC-ALPHA Study. *Br J Psychiatry*. 1999;175:433–8.
- Di Carlo A, Baldereschi M, Amaducci L, Lepore V, Bracco L, Maggi S, et al. Incidence of dementia: Alzheimer's disease, and vascular dementia in Italy. The ILSA Study. *J Am Geriatr Soc*. 2002;50:41–8.
- López-Pousa S, Vilalta-Franch J, Llinàs-Regla J, Garre-Olmo J, Román GC. Incidence of dementia in a rural community in Spain: the Girona cohort study. *Neuroepidemiology*. 2004;23:170–7.



31. Ravaglia G, Forti P, Maioli F, Martelli M, Servadei L, Brunetti N, et al. Incidence and etiology of dementia in a large elderly Italian population. *Neurology*. 2005;64:1525–30.
32. Bermejo-Pareja F, Benito-León J, Vega S, Medrano MJ, Román GC, Neurological Disorders in Central Spain (NEDICES) Study Group. Incidence and subtypes of dementia in three elderly populations of central Spain. *J Neurol Sci*. 2008;264:63–72.
33. Lobo A, Lopez-Anton R, Santabarbara J, de-la-Cámara C, Ventura T, Quintanilla MA, et al. Incidence and lifetime risk of dementia and Alzheimer's disease in a Southern European population. *Acta Psychiatr Scand*. 2011;124:372–83.
34. Tola-Arribas MA, Yugueros MI, Garea MJ, Ortega-Valín F, Cerón-Fernández A, Fernández-Malvido B, et al. Prevalence of dementia and subtypes in Valladolid, northwestern Spain: the DEMINVAL study. *PLOS ONE*. 2013;8:e77688.
35. Launer LJ, Andersen K, Dewey ME, Letenneur L, Ott A, Amaducci LA, et al. Rates and risk factors for dementia and Alzheimer's disease. Results from EURODEM pooled analyses. *Neurology*. 1999;52:78–84.
36. Folstein MF, Folstein SE, McHugh PR. Mini-mental state: a practical method for grading the cognitive state of patients for the clinician. *J Psychiatr Res*. 1975;12:189–98.
37. Benton A. Manuel pour l'application du test de retention visuelle. Applications cliniques et expérimentales. Paris: Centre de Psychologie Appliquée; 1965.
38. Wechsler D. A standardized memory scale for clinical use. *J Psychol*. 1945;19:87–95.
39. Roth M, Huppert FA, Tym E, Mountjoy CQ, Diffident-Brown A, Shoosmith DJ. CAMDEX. The Cambridge Examination for Mental Disorders of the Elderly. Cambridge: Cambridge University Press; 1988.
40. Copeland JR, Keleher MJ, Kellet JM, Courlay AJ, Gurland BJ, Fleiss JL, et al. A semi-structured clinical interview for the assessment of diagnosis and mental state in the elderly. The geriatric mental state schedule. I. Development and reliability. *Psychol Med*. 1976;6:439–49.
41. Copeland JR, Dewey ME, Wood N, Searle R, Davidson IA, McWilliam C. Range of mental illness amongst the elderly in the community: prevalence in Liverpool using the GMS-AGECAT package. *Br J Psychiatry*. 1987;150:815–23.
42. Kahn RL, Goldfarb AI, Pollack M, Peck A. Brief objective measures for the determination of mental status in the aged. *Am J Psychiatry*. 1960;117:326–8.
43. Asberg M, Montgomery SA, Perris C, Schalling D, Sedvall G. A comprehensive psychopathological rating scale. *Acta Psychiatr Scand*. 1978;57 Suppl. 271:5–27.
44. Rocca WA, Bonaiuto S, Lippi A, Luciani P, Pistarelli T, Grandinetti A, et al. Validation of the Hodkinson abbreviated mental test as a screening instrument for dementia in an Italian population. *Neuroepidemiology*. 1992;11:288–95.
45. Davis PB, White H, Price JL, McKeel D, Robins JL. Retrospective post-mortem dementia assessment: validation of a new clinical interview to assist neuropathologic study. *Arch Neurol*. 1991;48:613–7.
46. Yesavage JA, Brink TL, Rose TL, Lum O, Huang V, Adey M, et al. Development and validation of a geriatric depression screening scale: a preliminary report. *J Psychiatr Res*. 1983;17:37–49.
47. Pfeffer RI, Kurosaki TT, Harrah CH, Chance JM, Filos S. Measurement of functional activities in older adults in community. *J Gerontol*. 1982;37:323–9.
48. Dewey ME, Copeland JRM, Lobo A, Saz P, Dia JL. Computerised diagnosis from a standardised history schedule: a preliminary communication about the organic section of the HAS-AGECAT system. *Int J Geriatr Psychiatry*. 1992;7:443–6.
49. Solomon PR, Hirschhoff A, Kelly B, Relin M, Brush M, DeVeaux RD, et al. A 7 minute neurocognitive screening battery highly sensitive to Alzheimer's disease. *Arch Neurol*. 1998;55:349–55.
50. Jorm AF, Korten AE. Assessment of cognitive decline in the elderly by informant interview. *Br J Psychiatry*. 1988;152:209–13.
51. Kawas C, Segal J, Stewart WF, Corrada M, Thal LJ. A validation study of the dementia questionnaire. *Arch Neurol*. 1994;51:901–6.
52. American Psychiatric Association. Diagnostic and statistical manual of mental disorders. 3rd ed. revised Washington, DC: American Psychiatric Association; 1987.
53. American Psychiatric Association. Diagnostic and statistical manual of mental disorders. 4th ed. Washington, DC: American Psychiatric Association; 1994.
54. McKhann G, Drachman D, Folstein M, Katzman R, Price D, Stadlan EM. Clinical diagnosis of Alzheimer's disease: report of the NINCDS-ADRDA Work Group under the auspices of Department of Health and Human Services Task Force on Alzheimer's Disease. *Neurology*. 1984;34:939.
55. Roman GC, Tatemichi TK, Erkinjuntti T, Cummings JL, Masdeu JC, Garcia JH, et al. Vascular dementia: diagnostic criteria for research studies. Report of the NINDS-AIREN International Workshop. *Neurology*. 1993;43:250.
56. Matthews FE, Arthur A, Barnes LE, Bond J, Jagger C, Robinson L, et al. A two-decade comparison of prevalence of dementia in individuals aged 65 years and older from three geographical areas of England: results of the Cognitive Function and Ageing Study I and II. *Lancet*. 2013;382:1405–12.
57. Wu YT, Fratiglioni L, Matthews FE, Lobo A, Breteler MM, Skoog I, et al. Dementia in western Europe: epidemiological evidence and implications for policy making. *Lancet Neurol*. 2016;15:116–24.
58. De Bruijn RF, Bos MJ, Portegies ML, Hofman A, Franco OH, Koudstaal PJ, et al. The potential for prevention of dementia across two decades: the prospective, population-based Rotterdam Study. *BMC Med*. 2015;13:132.
59. Gao S, Hendrie HC, Hall KS, Hui S. The relationships between age, sex, and the incidence of dementia and Alzheimer disease: a meta-analysis. *Arch Gen Psychiatry*. 1998;55:809–15.
60. Andersen K, Launer LJ, Dewey ME, Letenneur L, Ott A, Copeland JR, et al. Gender differences in the incidence of AD and vascular dementia. The EURODEM Studies. *Neurology*. 1999;53:1992–7.
61. Letenneur L, Launer J, Andersen K, Dewey ME, Ott A, Copeland JR, et al. Education and risk for Alzheimer's disease: sex makes a difference EURODEM pooled analyses. *Am J Epidemiol*. 2000;151:1064–71.
62. Chan KY, Wang W, Wu JJ, Liu L, Theodoratou E, Car J, et al. Epidemiology of Alzheimer's disease and other forms of dementia in China, 1990–2010: a systematic review and analysis. *Lancet*. 2013;381:2016–23.
63. Wada-Isoe K, Uemura Y, Suto Y, Doi K, Imamura K, Hayashi A, et al. Prevalence of dementia in the rural island town of Amacho, Japan. *Neuroepidemiology*. 2009;32:101–6.
64. Yamada M, Mimori Y, Kasagi F, Miyachi T, Ohshita T, Sudoh S, et al. Incidence of dementia, Alzheimer disease, and vascular dementia in a Japanese population: radiation effects research foundation adult health study. *Neuroepidemiology*. 2008;30:152–60.
65. Kim YJ, Han JW, So YS, Seo JY, Kim KY, Kim KW. Prevalence and trends of dementia in Korea: a systematic review and meta-analysis. *J Korean Med Sci*. 2014;29:903–12.
66. Wu YT, Brayne C, Matthews FE. Prevalence of dementia in East Asia: a synthetic review of time trends. *Int J Geriatr Psychiatry*. 2015;30:793–801.
67. Ninomiya T. Patterns of Japanese diet and risk of dementia. *Curr Nutr Rep*. 2015;4:136–42.
68. Brookmeyer R, Evans DA, Hebert L, Langa KM, Heeringa SG, Plassman BL, et al. National estimates of the prevalence of Alzheimer's disease in the United States. *Alzheimers Dement*. 2011;7:61–73.

69. Kukull WA, Higdon R, Bowen JD, McCormick WC, Teri L, Schellenberg GD, et al. Dementia and Alzheimer disease incidence: a prospective cohort study. *Arch Neurol.* 2002;59:1737–46.
70. Opie RS, Ralston RA, Walker KZ. Adherence to a Mediterranean-style diet can slow the rate of cognitive decline and decrease the risk of dementia: a systematic review. *Nutr Diet.* 2013;70:206–17.
71. Singh B, Parsaik AK, Mielke MM, Erwin PJ, Knopman DS, Petersen RC, et al. Association of Mediterranean diet with mild cognitive impairment and Alzheimer's disease: a systematic review and meta-analysis. *J Alzheimers Dis.* 2014;39:271–82.