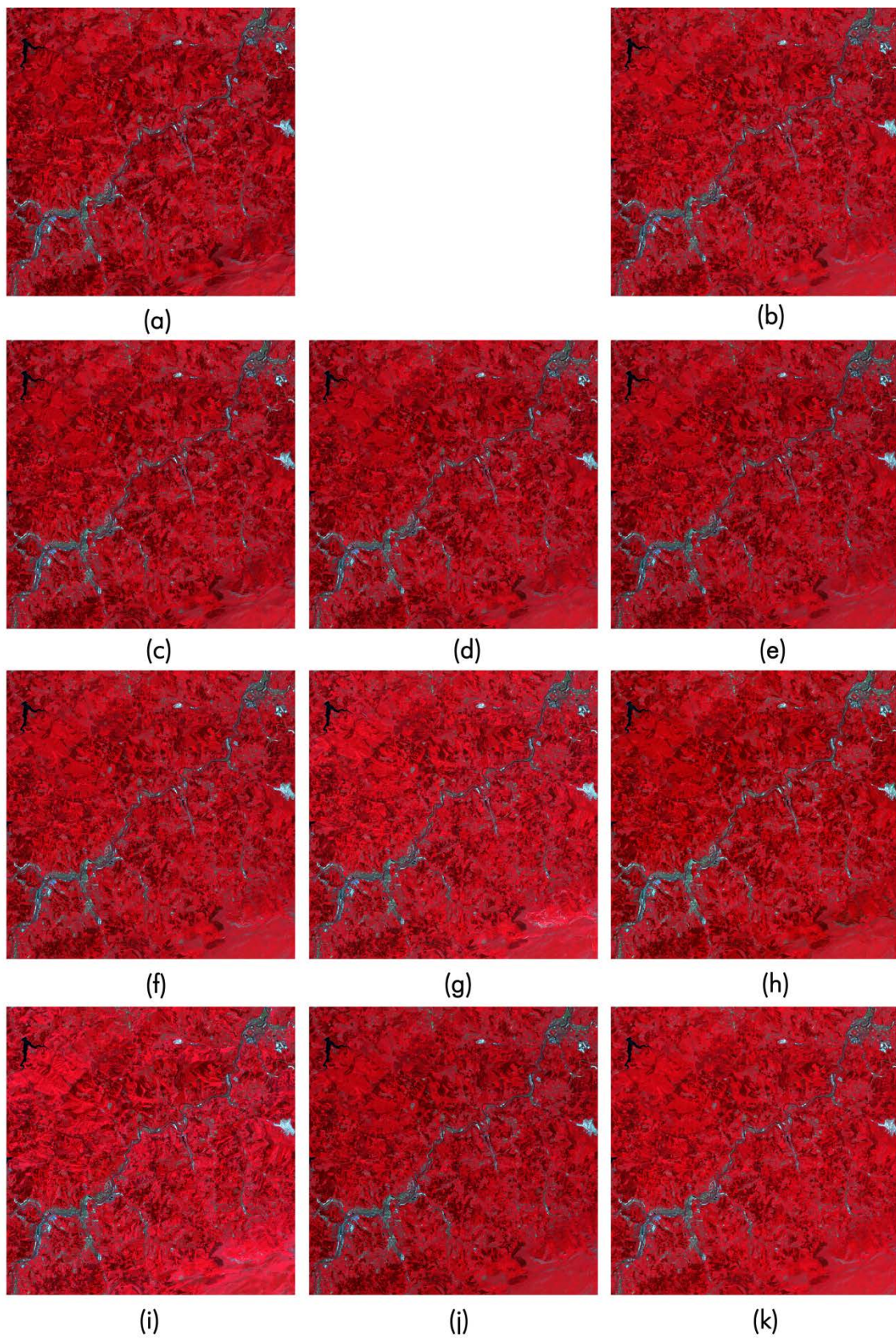


## SUPPLEMENTARY DATA

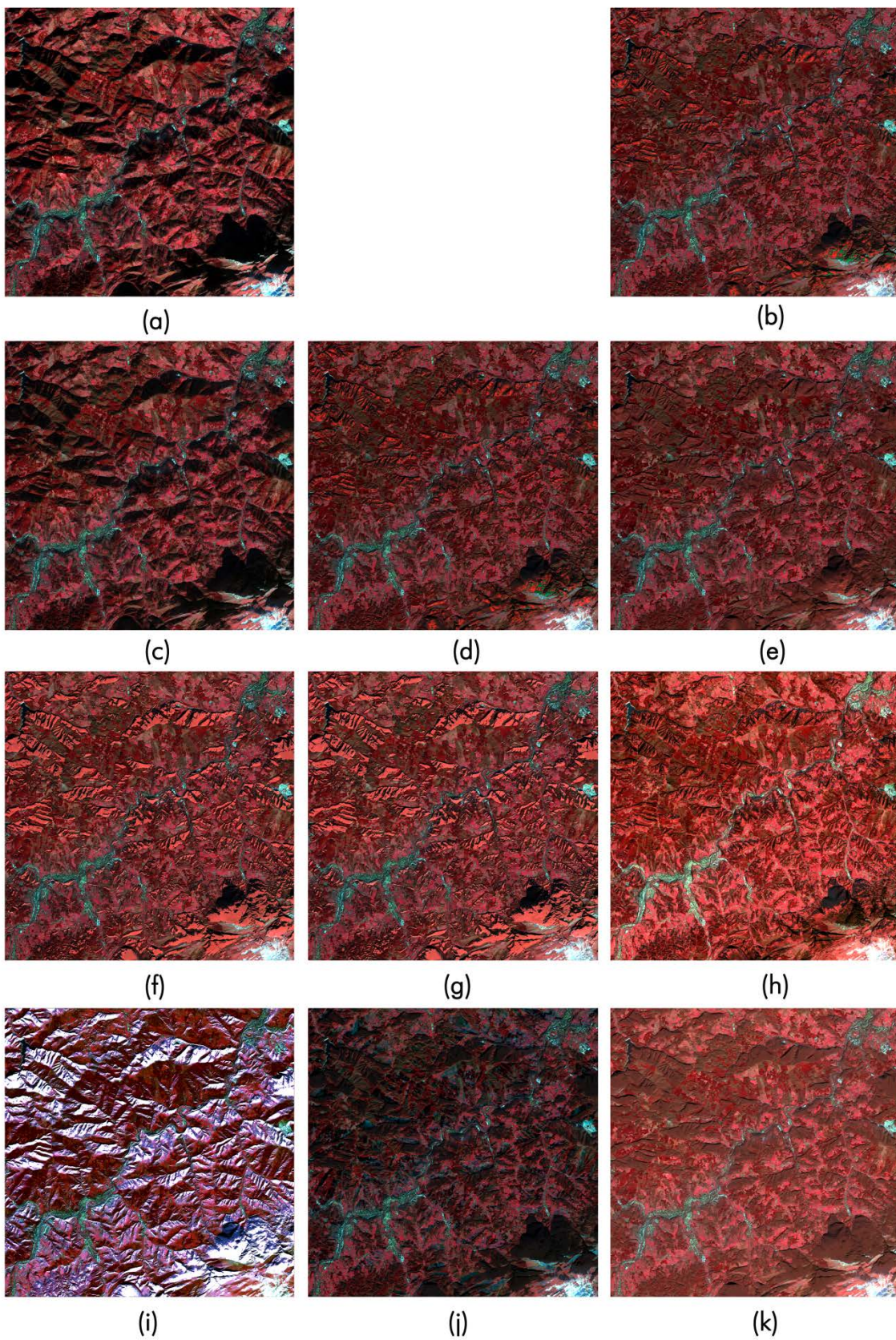
# Multi-criteria evaluation of topographic correction methods

Ion Sola, María González-Audícana and Jesús Álvarez-Mozos



**Fig. S1.** Original (a) and corrected images of June with TOCs (b) CC (c) sCC3 (d) SCSC (e) SE (f) MIN (g) EMIN (h) PBM (i) MM (j) 2SN (k) SM





**Fig S2.** Original (a) and corrected images of December with TOCs (b) CC (c) sCC3 (d) SCSC (e) SE (f) MIN (g) EMIN (h) PBM (i) MM (j) 2SN (k) SM

**TABLE S1.** Intraclass IQR reduction of land covers for each image and spectral band.

BAND 1	BROAD	CONIF	MIXED	JUNE				
				AGRIC	GRASS	SHRUB	URBAN	ROCK
CC	-16.736	-5.155	-14.339	-3.259	-8.201	-16.312	<b>4.303</b>	12.450
sCC3	0.383	<b>3.128</b>	<b>1.136</b>	-1.520	1.886	-3.829	-0.038	8.476
SCSC	-5.435	0.662	-4.410	-0.762	-2.142	-14.784	3.593	<b>18.623</b>
SE	-14.337	-3.454	-12.134	-1.187	0.661	-11.151	4.143	12.928
MIN	-12.527	-3.702	-11.320	-2.299	-3.069	-14.244	1.584	13.224
EMIN	-69.139	-24.195	-53.533	-11.543	-55.445	-35.094	1.116	<b>-13.362</b>
PBM	-21.983	1.828	-15.429	-11.950	-39.690	-20.732	-34.452	12.879
MM	<b>-181.553</b>	<b>-77.289</b>	<b>-145.354</b>	<b>-49.499</b>	<b>-165.639</b>	<b>-102.875</b>	<b>-73.748</b>	-7.068
2SN	-0.724	1.771	-1.924	<b>0.282</b>	5.375	-4.808	3.886	11.215
SM	<b>0.963</b>	2.406	-0.381	-1.308	<b>5.936</b>	<b>-3.261</b>	3.156	7.889
BAND 2	BROAD	CONIF	MIXED	AGRIC	GRASS	SHRUB	URBAN	ROCK
CC	-35.976	-16.435	-13.659	-0.668	8.688	-24.848	6.543	5.549
sCC3	6.263	<b>5.616</b>	<b>17.575</b>	0.238	9.465	-4.614	2.858	5.049
SCSC	-14.147	-4.653	2.712	1.756	8.026	-16.777	6.098	<b>15.185</b>
SE	-39.463	-20.731	-14.401	1.343	<b>16.147</b>	-17.934	6.499	7.726
MIN	-20.250	-9.194	-3.169	-0.342	11.061	-21.095	3.780	5.990
EMIN	-83.178	-40.788	-45.431	-3.972	-4.354	-44.024	3.464	<b>-16.600</b>
PBM	-18.234	-3.935	-0.658	-3.838	-6.796	-16.128	<b>-52.780</b>	12.345
MM	<b>-125.631</b>	<b>-79.257</b>	<b>-77.351</b>	<b>-6.823</b>	<b>-19.777</b>	<b>-62.107</b>	-21.530	-2.851
2SN	3.412	3.815	13.519	<b>2.267</b>	13.204	-5.183	<b>6.966</b>	6.051
SM	<b>7.312</b>	4.954	17.234	0.215	11.940	<b>-3.695</b>	5.964	1.533
BAND 3	BROAD	CONIF	MIXED	AGRIC	GRASS	SHRUB	URBAN	ROCK
CC	6.080	-4.456	4.889	2.229	16.371	13.737	5.321	22.519
sCC3	6.290	<b>0.737</b>	4.974	2.858	6.509	6.550	4.164	9.329
SCSC	<b>11.951</b>	0.444	<b>10.589</b>	4.591	10.401	14.404	6.775	13.594
SE	11.793	-0.102	10.078	4.019	19.739	17.213	5.396	27.281
MIN	6.451	-4.078	5.323	2.448	17.112	14.304	2.996	22.296
EMIN	-9.271	-11.818	-10.871	-2.137	16.544	5.652	1.652	12.406
PBM	7.845	-2.009	6.059	1.747	6.973	9.280	<b>-77.487</b>	<b>-13.715</b>
MM	<b>-26.899</b>	<b>-15.444</b>	<b>-32.356</b>	<b>-8.992</b>	<b>-18.845</b>	<b>-8.759</b>	-2.672	-1.549
2SN	8.281	-0.392	6.596	<b>6.468</b>	19.305	17.344	<b>8.404</b>	26.275
SM	10.320	-0.656	7.742	3.637	<b>20.994</b>	<b>18.432</b>	6.708	<b>27.586</b>
BAND 4	BROAD	CONIF	MIXED	AGRIC	GRASS	SHRUB	URBAN	ROCK
CC	1.574	-3.423	11.722	10.418	6.218	4.999	9.093	<b>44.179</b>
sCC3	5.515	1.716	12.498	8.056	3.117	9.483	6.556	13.929
SCSC	<b>12.339</b>	<b>3.081</b>	<b>20.153</b>	<b>14.711</b>	2.475	8.200	9.316	29.596
SE	8.437	1.629	17.278	12.129	<b>12.883</b>	12.184	<b>11.934</b>	37.500
MIN	3.381	-2.698	13.009	10.348	9.202	7.209	8.129	42.929
EMIN	-22.433	-13.139	-9.481	2.271	-0.191	-15.116	6.988	-11.954
PBM	9.581	0.079	16.297	10.708	-6.583	0.538	<b>-123.781</b>	8.689
MM	<b>-45.277</b>	<b>-16.054</b>	<b>-29.918</b>	<b>-2.026</b>	<b>-34.442</b>	<b>-48.188</b>	0.084	<b>-13.961</b>
2SN	7.485	1.900	15.649	14.605	10.276	11.886	3.196	40.087
SM	8.879	1.515	16.507	11.431	12.618	<b>13.285</b>	9.418	33.340



AUGUST								
BAND 1	BROAD	CONIF	MIXED	AGRIC	GRASS	SHRUB	URBAN	ROCK
CC	6.687	-11.766	0.975	11.264	29.722	0.656	-0.414	24.218
sCC3	22.192	7.941	13.953	4.566	13.495	5.084	-0.845	9.500
SCSC	14.395	-4.776	7.773	12.133	28.517	0.518	-1.112	29.665
SE	7.192	-15.773	2.172	11.381	31.926	3.795	-0.038	18.813
MIN	10.806	-6.315	4.888	10.088	30.896	1.406	-0.435	22.548
EMIN	-20.340	-30.735	-20.368	8.566	16.870	-9.247	-1.154	18.178
PBM	-18.777	-17.695	-21.858	-2.204	-9.541	-20.651	-9.989	5.020
MM	-340.576	-327.776	-327.442	-68.394	-174.666	-178.093	-7.329	-10.435
2SN	23.073	4.693	14.130	10.805	25.743	7.152	1.304	17.077
SM	23.091	7.885	13.733	3.020	13.102	5.788	-0.710	5.490
BAND 2	BROAD	CONIF	MIXED	AGRIC	GRASS	SHRUB	URBAN	ROCK
CC	-21.975	-34.027	-25.585	8.996	14.663	-7.696	0.842	22.677
sCC3	15.440	1.212	7.079	6.215	4.311	3.214	0.995	7.706
SCSC	-6.944	-23.074	-14.670	11.431	16.485	-2.101	0.931	27.983
SE	-25.466	-45.970	-28.014	9.415	18.881	-2.422	1.618	14.778
MIN	-9.110	-18.780	-13.231	7.886	15.687	-6.243	0.764	19.950
EMIN	-44.370	-45.566	-44.246	6.114	5.416	-17.517	0.638	12.937
PBM	-33.385	-34.862	-39.716	4.043	-10.350	-14.110	-15.799	12.915
MM	-269.782	-269.545	-262.305	-2.636	-62.898	-90.427	-0.940	26.919
2SN	13.862	-2.209	4.111	9.611	12.439	4.228	3.499	13.458
SM	17.094	1.056	5.721	5.050	1.816	3.045	1.616	1.071
BAND 3	BROAD	CONIF	MIXED	AGRIC	GRASS	SHRUB	URBAN	ROCK
CC	15.678	3.226	13.040	8.343	9.576	22.273	1.198	30.604
sCC3	10.527	6.409	10.657	6.103	7.055	12.710	2.704	10.987
SCSC	22.154	8.850	18.765	8.839	8.202	22.504	4.096	21.924
SE	24.021	7.728	19.985	9.741	16.809	26.080	1.962	34.249
MIN	15.400	3.567	13.682	8.611	12.797	22.915	1.237	30.506
EMIN	3.575	-4.331	2.295	6.608	10.708	17.568	-3.884	30.622
PBM	12.327	-1.199	7.488	-0.371	-4.444	9.271	-7.968	-1.165
MM	-34.353	-26.548	-37.694	-7.805	-37.961	-19.404	-5.752	23.586
2SN	19.492	8.697	16.787	13.028	12.074	25.230	6.109	29.334
SM	18.933	8.876	17.837	8.269	13.650	20.407	2.812	21.456
BAND 4	BROAD	CONIF	MIXED	AGRIC	GRASS	SHRUB	URBAN	ROCK
CC	19.293	-0.789	19.401	15.741	12.771	11.822	3.547	45.636
sCC3	16.749	6.613	17.912	6.936	7.813	12.836	3.240	12.615
SCSC	27.894	7.048	26.481	18.273	11.059	13.677	4.611	35.186
SE	26.657	0.424	25.454	15.884	21.219	19.496	5.760	33.461
MIN	22.282	0.484	22.405	14.397	16.991	14.188	3.580	42.718
EMIN	6.385	-9.058	7.875	10.399	13.268	4.838	1.535	27.257
PBM	16.604	-5.068	14.004	4.501	-10.710	-3.650	-10.162	-1.852
MM	-32.582	-21.885	-26.181	8.151	-18.547	-25.570	0.086	31.385
2SN	27.432	7.753	25.668	20.668	16.824	20.898	9.158	36.401
SM	25.172	7.840	24.270	7.169	11.290	16.809	4.139	12.129

DECEMBER								
BAND 1	BROAD	CONIF	MIXED	AGRIC	GRASS	SHRUB	URBAN	ROCK
CC	46.961	18.717	40.563	33.500	39.114	54.213	11.554	35.134
sCC3	19.196	30.786	20.734	12.306	14.643	24.324	6.514	11.388
SCSC	49.062	21.452	42.822	33.227	39.177	55.395	10.755	35.948
SE	50.086	10.929	43.314	30.966	37.440	55.189	10.933	25.497
MIN	-29.570	-13.927	-13.291	24.044	34.508	21.648	8.121	35.861
EMIN	-44.983	-16.544	-14.847	24.625	32.986	20.574	6.841	36.968
PBM	9.002	-20.482	7.006	8.626	26.074	33.591	-20.894	26.241
MM	-5103.034	-783.523	-639.356	-156.143	-285.992	-279.125	-55.457	-62.748
2SN	44.600	31.819	43.094	32.679	33.918	52.913	10.463	30.210
SM	51.370	27.854	43.063	28.502	30.179	51.429	9.359	18.354
BAND 2	BROAD	CONIF	MIXED	AGRIC	GRASS	SHRUB	URBAN	ROCK
CC	45.760	5.528	38.051	38.220	44.183	52.984	7.415	47.275
sCC3	20.666	30.882	18.624	14.556	16.585	22.566	2.950	16.633
SCSC	48.150	9.717	41.173	39.344	45.018	54.782	7.275	50.388
SE	53.421	-8.730	44.751	36.054	41.531	54.880	7.163	30.402
MIN	-8.326	-33.747	-13.954	22.815	34.536	23.647	4.613	42.488
EMIN	-19.560	-37.272	-16.578	22.165	31.162	19.319	3.460	42.189
PBM	21.451	-23.410	14.032	9.407	27.085	36.499	-47.362	32.317
MM	-1931.118	-319.606	-230.207	-28.407	-122.704	-52.307	-15.142	6.780
2SN	48.110	28.390	41.091	40.843	40.768	53.694	7.929	45.389
SM	52.642	7.889	47.059	34.467	35.400	53.960	5.768	23.278
BAND 3	BROAD	CONIF	MIXED	AGRIC	GRASS	SHRUB	URBAN	ROCK
CC	38.283	56.183	34.947	36.014	43.865	58.297	4.949	57.875
sCC3	18.233	23.890	17.714	17.398	17.796	24.295	3.143	29.693
SCSC	42.515	58.624	39.318	37.002	44.902	60.781	6.997	56.167
SE	51.162	61.077	47.093	33.401	55.020	62.489	7.190	59.347
MIN	-61.677	40.499	2.355	29.230	29.278	42.921	1.575	50.860
EMIN	-76.750	36.925	-2.761	27.879	28.394	39.048	-0.091	47.545
PBM	-0.717	24.226	-8.107	-16.030	4.201	29.299	-77.072	17.267
MM	-1514.151	0.925	-118.318	29.683	-5.143	35.793	-3.075	40.383
2SN	48.884	45.697	40.784	26.413	41.193	58.649	9.253	47.930
SM	64.904	58.041	57.143	26.795	41.174	60.025	8.825	42.992
BAND 4	BROAD	CONIF	MIXED	AGRIC	GRASS	SHRUB	URBAN	ROCK
CC	32.727	24.146	29.589	53.642	47.158	54.802	6.956	64.222
sCC3	17.190	26.830	17.802	22.779	16.820	23.513	3.988	32.222
SCSC	37.180	29.761	34.102	55.000	49.847	57.591	8.179	64.591
SE	57.037	14.679	49.474	47.635	54.474	61.202	11.245	59.340
MIN	-25.476	-0.014	2.995	37.902	33.332	39.737	4.827	58.180
EMIN	-34.408	-5.137	-2.703	36.057	29.428	35.949	3.705	46.645
PBM	-5.922	-16.142	-12.412	-0.972	11.163	24.731	-123.552	34.083
MM	-1174.576	-37.438	-91.840	52.532	25.912	43.584	0.187	51.234
2SN	41.940	38.734	35.272	30.139	47.000	54.958	3.835	39.443
SM	60.649	34.162	54.561	42.592	45.981	58.796	9.565	44.234