

Editorial Manager(tm) for Environmental Monitoring and Assessment
Manuscript Draft

Manuscript Number:

Title: Strategic noise map of a major road carried out with two environmental prediction software.
Comparison of results.

Article Type: Original Research

Keywords: computational models; GIS; noise maps; traffic noise; urban noise prediction.

Corresponding Author: Dr. Miguel Arana, Ph.D.

Corresponding Author's Institution: Universidad Publica de Navarra

First Author: Miguel Arana, PhD

Order of Authors: Miguel Arana, PhD; Ricardo San Martin, M.D.; Maria Luisa San Martin, PhD; Emilio Aramendia, M.D.

Abstract: The main objective of this report is to analyze the differences found in the results of noise mapping using two of the most popular software techniques for the prediction of environmental noise. The location selected to conduct the comparative study is an area encompassed by the ring road that surrounds the city of Pamplona. In fact, and as the Environmental Noise Directive points out, it is a major road designated by a Member State (Spain). Configuration of the calculation parameters was as equivalent as possible as far as programs allow. In spite of that, a great number of differences appear in the findings. These are due to the various algorithms that programs implement to evaluate noise levels. Most differences pertain to highly screened receivers or remote ones. In the former, the algorithm of visibility is the main cause of such differences. In the latter, differences are mainly brought about by a different implementation of the propagation under homogeneous and favorable atmospheric conditions from both software systems.

1
2
3
4
5
6
7
8
9
10
11
12
13
14
15
16
17
18
19
20
21
22
23
24
25
26
27
28
29
30
31
32
33
34
35
36
37
38
39
40
41
42
43
44
45
46
47
48
49
50
51
52
53
54
55
56
57
58
59
60
61
62
63
64
65

Running Title: Noise maps from two prediction software

Title

Strategic noise map of a major road carried out with two environmental prediction software. Comparison of results.

Authors and affiliation

Arana, M.; San Martin, R.; San Martin, M.L.;Aramendía, E.

Acoustics Laboratory. Physics Department. Public University of Navarre.

Full address for correspondence

Campus de Arrosadia. 31006. Pamplona. Spain

E-mail: marana@unavarra.es

Phone: +34 948 169568

Fax: +34 948 169565

1
2
3
4
5
6
7
8
9
10
11
12
13
14
15
16
17
18
19
20
21
22
23
24
25
26
27
28
29
30
31
32
33
34
35
36
37
38
39
40
41
42
43
44
45
46
47
48
49
50
51
52
53
54
55
56
57
58
59
60
61
62
63
64
65

Abstract

The main objective of this report is to analyze the differences found in the results of noise mapping using two of the most popular software techniques for the prediction of environmental noise. The location selected to conduct the comparative study is an area encompassed by the ring road that surrounds the city of Pamplona. In fact, and as the Environmental Noise Directive points out, it is a *major road* designated by a Member State (Spain). Configuration of the calculation parameters was as equivalent as possible as far as programs allow. In spite of that, a great number of differences appear in the findings. These are due to the various algorithms that programs implement to evaluate noise levels. Most differences pertain to highly screened receivers or remote ones. In the former, the algorithm of visibility is the main cause of such differences. In the latter, differences are mainly brought about by a different implementation of the propagation under homogeneous and favorable atmospheric conditions from both software systems.

Keywords computational models, GIS, noise maps, traffic noise, urban noise prediction.

1
2
3
4
5 **1. Introduction**
6

7 After the approval of the European Environmental Noise Directive (END) 2002/49/CE
8 (Directive 2002/49/EC) for the evaluation and management of the environmental noise
9 (transposed to Spanish Legislation by the Noise Law 37/2003 (Ley 37/2003)) in the
10 prevention and reduction of the impact of acoustic pollution on the population,
11 nowadays society is aware of the noise pollution effects and it has set out to do research
12 and carry out inspections. Furthermore, establishing common assessment methods for
13 environmental noise and setting limit values in terms of harmonised indicators for the
14 determination of noise levels is required. The specific figures for any limit values must
15 be determined by the Member States but taking into account, *inter alia*, the need to
16 apply the principle of prevention so as to preserve quiet areas in agglomerations.
17 According to the END, noise maps and action plans should be implemented
18 progressively (Popp and Bing, 2005). As a result, in the last few years, mathematical
19 models and strategies for environmental noise prediction have been developed. The
20 calculations needed to draw such a noise map using such methods are tremendously
21 tedious, therefore making it necessary to program them on a computer. Some software
22 applying various official models in noise mapping-both for agglomerations and for large
23 infrastructures- began to be commercialized approximately ten years ago. It is
24 impossible to implement theoretical methods explicitly in the calculation algorithms not
25 only for their complexity but also for the increase in the calculation time. They simplify
26 the algorithms attempting to obtain the best time-precision ratio. As a consequence of
27 these simplifications, as well as their constant evolution, differences in results from
28 programs appear.
29

30 Many countries have developed their own traffic noise prediction models (Arana,
31 2001). Most of them were designed to meet the requirements of roadway engineers but
32
33
34
35
36
37
38
39
40
41
42
43
44
45
46
47
48
49
50
51
52
53
54
55
56
57
58
59
60
61
62
63
64
65

1
2
3
4
5 they do not, however, meet the requirements of other users of traffic noise models
6
7 (Steele, 2001). For countries without their own method, the END recommends the use
8
9 of the French method (NMPB-Routes, 1996) to calculate both the source and
10
11 propagation model for road traffic. This method is similar to ISO 9613-2 (ISO 9613 Part
12
13 2, 1996), but some of its features are more developed, such as the atmospheric
14
15 propagation conditions. The NMPB considers both favourable and homogeneous
16
17 conditions. Nevertheless, ISO 9613-2 only considers favourable ones. Another
18
19 difference is the way of splitting up the line sources. On the one hand ISO 9613-2
20
21 describes the *Raster Factor* method and on the other NMPB also allows equiangular
22
23 and variable splitting up methods.
24
25
26

27
28 Two of the most widely used software programs in the prediction of environmental
29
30 noise- SoundPlan (SoundPLAN, 2005) and Cadna/A (Cadna/A, 2005) - have been
31
32 analysed in this report. We will refer to them as SP and CA respectively. Even though
33
34 both programs implement the NMPB method, they are unable to configure all the
35
36 parameters in the same way, thus giving rise to differences in the results. Examples of
37
38 these variations are those caused by the source discretization method, which is
39
40 implemented by angular step in SP and by the *Raster Factor* in CA.
41
42
43

44 The main objective of this report is to analyse the differences found in the results of
45
46 noise mapping by resorting to the two above-mentioned software systems.
47
48
49

50 51 **2. Strategic noise map of the ring-road in Pamplona (Spain)**

52
53 Pamplona is a medium-sized town with a population of 190,000 and capital of Navarre, a
54
55 province located in the north of Spain. Previous research work relating to noise
56
57 disturbance in the community (Arana and Garcia, 1998) and noise mapping (Arana et
58
59 al., 2003) has been carried out. The location selected to conduct the present comparative
60
61
62
63
64
65

1
2
3
4
5 study is an area taking the ring road that surrounds the city of Pamplona in. In fact-and
6
7 as the END states- it is a *major road* designated by a Member State (Spain), which has
8
9 an annual traffic flow of over three million vehicles. Fig. 1 and Fig. 2 reflect the
10
11 location of Pamplona in Spain and the calculation area respectively.
12
13

14 ***Note: Figures 1 and 2***

15
16
17
18 Traffic running on the ring road is the source of noise. Both the traffic flow and the
19
20 average speed inserted at each and every line were provided by both the Transport
21
22 Department of the Local Government of Navarre and by Navarre's Motorway Company
23
24 basing themselves on recorded data from 2005. The Digital Terrain Model (DTM) was
25
26 designed by using elevation points and level curves of the ground (iso-curves and
27
28 elevation lines) elaborated by the Trabajos Catastrales S.A. company. This location is
29
30 extremely interesting for a comparative study because it poses a great number of
31
32 situations to evaluate. It combines not only urban and rural zones but also flat and
33
34 sloping terrain with positive and negative gradients. The software programs used to
35
36 draw up the strategic noise maps were CA 3.6.118 from Datakustik and SP 6.4 from
37
38 Braunstein + Berndt GmbH. Nowadays, they are two of the most popular environmental
39
40 prediction software systems.
41
42
43
44
45

46 The European Working Group Commission *Assessment of Exposure to Noise*, WG-
47
48 AEN, drew up a Position Paper with the aim to help Member States and their competent
49
50 authorities to undertake noise mapping and provide the associated data as required by
51
52 the END (WG-AEN, 2006). It was hoped that the content of this Position Paper could
53
54 be particularly helpful for the preliminary draft of strategic noise mapping, which was
55
56 supposed to have been completed by 30 June 2007. It was not meant to be a manual for
57
58 strategic noise mapping but a source of reference for advice on specific issues that were
59
60
61
62
63
64
65

1
2
3
4
5 raised initially by Member States. The Position Paper agrees that several of these issues
6
7 are quite complex and have been dealt with in detail. In fact, when a sole variable is
8
9 under study, quantifying its influence on the calculation is not challenging. Nevertheless
10
11 many of the variables are somehow connected with the calculation.
12
13

14 With the purpose of comparing the findings from both programs, a receiver points
15
16 set was placed on a 10 x 10 m square grid, 4 m above the ground. The DTM was
17
18 determined from the same elevation points and iso-curves. Naturally, all sources and
19
20 buildings were identical for both software programs. The sole difference was how the
21
22 bridge objects were dealt with. CA models bridges but in SP such objects do not exist
23
24 and it is extremely complex to represent them in a similar way. The software procedures
25
26 enabled us to come up with several configurations of the parameters. A similar
27
28 configuration for both programs was used in this report (Table 1).
29
30
31

32 ***Note: Table 1***
33
34
35
36

37 Even though line source maps offer more reliable knowledge as to point source
38
39 maps (Yilmaz and Hocanli, 2006), a splitting up of the sources is needed in order to
40
41 evaluate noise levels at receivers through a computational system. The splitting up of
42
43 the line sources into equivalent point sources was configured by means of two different
44
45 methods in SP and CA. The *Raster Factor* was established at 0.5, as it is the maximum
46
47 value tolerated by ISO 9613-2 and which provides a very good time-accuracy ratio.
48
49 Error in the calculation of an infinite line source is, in practice, equivalent if a *Constant*
50
51 *Angular Step* of 2 is used (Arana and Aramendia, 2006). Whilst SP allows selecting
52
53 lateral diffraction, CA does not calculate it whatsoever. A grid interpolation of 1 in SP
54
55 is equivalent to no interpolation at all in CA. One of the most outstanding differences is
56
57 found in the calculation of points within buildings. In SP it is possible to select the
58
59
60
61
62
63
64
65

1
2
3
4
5 number of substitutive points but not the eliminated points. CA gives the option to
6
7 either calculate them or not. Despite choosing not to calculate points inside buildings,
8
9 both programs calculated some of them, but not exactly in the same way. The reflected
10
11 surface search radius was only configurable in CA. Interpolation values were made use
12
13 of. So as to select the reflecting surfaces depending on their sizes, SP applies two rules
14
15 based on the angle of incidence, the wavelength and the distance between source,
16
17 receiver and reflecting surface. The configuration of reflection depth is only possible in
18
19 SP, because through CA it is infinite by default. These are the reasons why the number
20
21 of reflections is not the same in both programs.
22
23
24
25
26
27

28 **3. Results**

29 **3.1. Differences on DGM**

30
31
32 Wide variety methods have been developed to calculate the DTM by resorting to
33
34 various algorithms. Concerning the two software systems analyzed in this report, CA
35
36 presents three possible configurations whereas SP does not have any configurable
37
38 parameter, and as a result its generated DTM is unique. This method -called
39
40 *triangulation*- is based on the creation of triangular surfaces from existing contour lines
41
42 and elevation points. Yet in CA it is also feasible to create a DTM by searching for
43
44 contour lines with a specified radius. The first option so as to obtain the z-coordinates of
45
46 the points is by calculating the average of the defined contour lines according to
47
48 squared-distances. The second one is by reducing the distance from plane surfaces by
49
50 means of defined contour lines. In addition to these two options, the relative height of
51
52 the base of some objects may be taken as a reference point.
53
54
55
56

57
58 As the triangulation method generally provides the best results, this method has
59
60 been used in our present research. It is based on Delaunay's triangulation since it is a
61
62
63
64
65

1
2
3
4
5 computational structure which enables researches to obtain an excellent triangulation to
6
7 depict the terrain. However, the various methods to implement the algorithm in
8
9 geometric computational software to achieve a faster and less complex method of
10
11 calculation generate some differences in the results.
12
13

14 To compare the DTM generated by CA and SP, calculating a grid of receivers will
15
16 be required as it is not possible to export the triangulation of the DTM. The analysis is
17
18 based on calculating the difference at each point of the grid. In this report, an area
19
20 covering the city of Pamplona and its surroundings (including the ring-road area) was
21
22 used. The DTM was generated from 19,554 elevation points, 6,063 contour lines (iso-
23
24 lines) and 11,448 curve lines (different height at each point). The z-coordinates of
25
26 points ranged from 380 to 750 meters. The grid was 10 x 10 meters in size and the total
27
28 number of points was, approximately, 1.26×10^6 .
29
30
31

32
33 *Note: Figure 3*
34
35
36

37 Fig. 3 shows the histogram of differences (z-coordinate difference for all the $1.26 \times$
38
39 10^6 calculated points and compared one by one) grouped in ranges of 0.1 m, either
40
41 positive or negative. 93.3% of the points differs less than 0.5 m, 5.8 % differ between
42
43 0.5 and 2 m, 0.9 % differs between 2 and 5 m and 0.1% differs over 5 m. The two last
44
45 ranges are not represented in the graphic. Fig. 4 shows a coloured map of differences
46
47 outlining a small area that enables us to see the size of the grid and differences. The
48
49 larger differences are concentrated near the boundary lines of the calculation area,
50
51 especially in terrain with high gradients. With regards to this point, the most important
52
53 conclusion drawn is that differences on predicted noise levels are not due (in the
54
55 majority of cases) to differences obtained in the calculated DTM.
56
57
58
59

60
61 *Note: Figure 4*
62
63
64
65

3.2 Ld and Ln differences

For the strategic noise map of the ring road, the number of grid points calculated by each software- 6×10^5 , approximately, in the calculation area- varies. The main reason is that different methods are used to eliminate points inside buildings. Moreover, SP calculates some extra points in the boundary lines of the calculation area. To avoid unreal differences only the coincidental points from CA and SP have been utilized in the comparative study. Fig. 5 and Fig. 6 show (again by a colored map) the differences on Ld and Ln figures from both programs.

Note: Figures 5 and 6

Fig. 5 shows an evident predominance of zones with a higher level in SP. These negative differences are almost in all cases less than 2 dB and are located in open air zones and/or areas with positive ground gradients-viewed from the line sources. Even though there are fewer zones with positive differences-higher level predicted from CA- such differences are larger. These areas are found in urban areas and/or areas with negative gradients. In short, areas where receivers are screened more.

As shown in Fig. 6, there is a substantial change for the night. We must bear in mind that all the source variables -traffic flow, speeds, etc.- are identical for both software programs but the algorithms they make use of -discretization of the sources, reflection, etc.- are not exactly identical. Therefore, the ideal way to identify the cause of these differences is to display the Ln-Ld differences, that is to say, the difference among the differences from both programs (see Fig. 7). The implementation of the propagation under homogeneous and favorable atmospheric conditions varies according to the software programs resorted to.

Note: Figure 7

1
2
3
4
5 A positive value in the map of Fig. 7 means that the difference between favorable
6 and homogeneous conditions for propagation is higher in CA. and a negative one is
7 higher in SP. Clearly, CA favors propagation under favorable atmospheric conditions.
8
9

10
11 The number of points with differences over 10 dB- positive or negative- represents a
12 very low percentage of the total points (926 of 500,000) and the causes can be classified
13 under four different types: a) points within or on the building's boundaries calculated
14 with both programs, b) points with a great z-coordinate difference from the DGM, c)
15 points located behind bridges-only CA covers these situations- and d) points located far
16 away from sources and/or on great sloping terrain (see Fig. 8).
17
18
19
20
21
22
23
24
25

26 *Note: Figure 8*
27

28
29
30 From a statistical point of view, there is yet another way to display the results with
31 the aim of finding causes for the differences. By grouping the noise levels in ranges of 5
32 dB (from less than 50 dB to over 75 dB for Ld and from less than 45 dB to over 75 dB
33 for Ln) Fig. 9 and Fig. 10 are obtained.
34
35
36
37
38

39 *Note: Figures 9 and 10*
40

41
42
43 Three findings are achieved from these graphs. Firstly, the higher the noise level is
44 (receiver points near the line sources) the lower the differences are. Only 3% of the
45 receiver points with noise levels up to 70 dB differ over 1 dB. Secondly, the lower the
46 noise level is (receiver points either far away from the line sources or screened) the
47 greater the differences are. Almost 27.4% of the receiver points with noise levels down
48 to 70 dB differ over 1 dB. Finally, although the day and night period graphics are quite
49 similar, a displacement of the lower ranges to positive differences is perceptible. These
50 entire findings suggest that the accuracy of predictions is exceptional for receiver points
51
52
53
54
55
56
57
58
59
60
61
62
63
64
65

1
2
3
4
5 with high levels when the source discretization algorithm is solely used- and assuming
6
7 there is a reliable source model- but predictions deviate for receiver points with low
8
9 levels when many algorithms have a bearing, namely order and depth reflection,
10
11 diffraction, etc. Fig. 11 (Ld) and Fig. 12 (Ln) show identical results although through
12
13 accumulated distribution.
14

15
16 *Note: Figures 11 and 12*
17
18
19
20

21 **4. Conclusions**

22
23 Two of the most widely used programs for the prediction of environmental noise have
24
25 been used to determine the strategic noise map of the ring road that surrounds the city of
26
27 Pamplona. All the initial data, both to generate the DGM (points, iso-curves, etc.) and to
28
29 define the sources of noise (roads, traffic flow, speeds, etc.) were exactly the same. The
30
31 French method, NMPB, was used to evaluate noise levels on the grid-with a total of
32
33 6×10^5 points, approximately. Configuration of the calculation parameters was the most
34
35 equivalent model that programs allowed. In spite of that, many differences appeared in
36
37 the findings. Differences were due to the various algorithms that programs implement to
38
39 evaluate noise levels.
40
41
42

43
44 Although in 95.5% of the points the difference in the noise level calculated from the
45
46 two programs was less than 3 dB, this general statistic result concealed some great
47
48 differences. Most differences were related to points which were highly screened or
49
50 located far away from the sources. In the former, the algorithm of visibility was the
51
52 main cause of such differences. In the latter, differences were mainly brought about by a
53
54 different implementation of the propagation under homogeneous and favorable
55
56 atmospheric conditions from both software procedures.
57
58
59
60
61
62
63
64
65

1
2
3
4
5 **Acknowledgements**
6

7 The authors would like to deeply thank to the Environmental Department of the
8 Government of Navarre for their grant to carry out this research. Authors are also
9 indebted to Trabajos Catastrales, S.A. for their cooperation.
10
11
12
13
14

15
16 **References**
17

18 Directive 2002/49/EC of the European Parliament and of the Council of 25 June relating
19 to the assessment and management of environmental noise. (2002)
20
21

22 Ley 37/2003, de 17 de noviembre, del Ruido. (2003) (in Spanish). B.O.E. nº 276
23
24 <http://www.boe.es/boe/dias/2003/11/18/pdfs/A40494-40505.pdf>
25
26

27 C. Popp & M. Bing. (2005) From noise mapping to action planning. *Forum Acusticum*
28
29 2005. Budapest, Hungary.
30
31

32 Arana, M. (2001) Prediction of Urban Noise. In: Garcia, A (Ed), *Environmental Urban*
33
34 *Noise*. WITT PRESS, Southampton, pp. 149-181. ISBN: 1-85312-752-3
35
36

37 Campbell Steele. (2001) A critical review of some traffic noise prediction models.
38
39 *Applied Acoustics*. 62 (3), 271-287.
40
41

42 NMPB-Routes-96 (SETRA-CERTULCPC-CSTB).
43
44

45 ISO 9613 (1996) Acoustics – Attenuation of sound during propagation outdoors –
46
47 Part2: General method of calculation. Genève, Switzerland.
48
49

50 SoundPLAN, Wins–User’s Manual: Technical Acoustics in SoundPLAN, 2005.
51
52

53 Cadna/A, DataKustik, Instructions for use, 2005.
54
55

56 Miguel Arana & Amando Garcia. (1998) A Social Survey on the Effects of
57
58 Environmental Noise on the Residents of Pamplona, Spain. *Applied Acoustics*. 53
59
60 (4), 245-253.
61
62
63
64
65

1
2
3
4
5
6
7
8
9
10
11
12
13
14
15
16
17
18
19
20
21
22
23
24
25
26
27
28
29
30
31
32
33
34
35
36
37
38
39
40
41
42
43
44
45
46
47
48
49
50
51
52
53
54
55
56
57
58
59
60
61
62
63
64
65

M. Arana; M.L. San Martin; A. Vela; R. San Martin. (2003) Acoustic map of Pamplona, Spain. Percentile of people affected by environmental noise. In Almorza, D Brebbia, C A and Hernandez, R (Eds) *Modelling and Experimental Measurements in Acoustics*. WITT PRESS, Southampton, pp. 35-44. ISBN: 1-85312-975-5.

WG-AEN (2006) Good Practice Guide for Strategic Noise Mapping and the Production of Associated Data on Noise Exposure. European Commission Working Group. Assessment of Exposure to Noise. Final Draft v.2. Brussels. http://circa.europa.eu/Public/irc/env/noisedir/library?l=/material_mapping/goodspracticesinsnoisesm/workingsgroupsaen&vm=detailed&sb=Title

Yilmaz, G. & Hocanli, Y. (2006) Mapping of noise by using GIS in Şanlıurfa, *Environmental Monitoring and Assessment* **121**, 103–108.

Arana, M & Aramendia, E. (2006) *Comparison between raster factor and constant angular step in noise mapping*. (Paper presented at the Congress Euronoise'2006, Tempere, Finland)

1
2
3
4
5
6
7
8
9
10
11
12
13
14
15
16
17
18
19
20
21
22
23
24
25
26
27
28
29
30
31
32
33
34
35
36
37
38
39
40
41
42
43
44
45
46
47
48
49
50
51
52
53
54
55
56
57
58
59
60
61
62
63
64
65

Figure legends

Fig. 1 Location of Pamplona (Spain)

Fig. 2 Calculation area (green for ring-road)

Fig. 3 Histogram of differences in DTM (SP-CA)

Fig. 4 z-coordinate differences (SP-CA) in the DGM

Fig. 5 Map of differences (CA-SP) - Ld: day period

Fig. 6 Map of differences (CA-SP) - Ln: night period

Fig. 7 Map of Ln-Ld differences $[(Ln-Ld)_{CA}-(Ln-Ld)_{SP}]$

Fig. 8 Main reasons to explain the noise levels differences

Fig. 9 Normalised percentage histogram for levels intervals - Ld: day period

Fig. 10 Normalised percentage histogram for levels intervals - Ln: night period

Fig. 11 Accumulated percentage histogram of differences - Ld: day period

Fig. 12 Accumulated percentage histogram of differences - Ln: night period

Tables

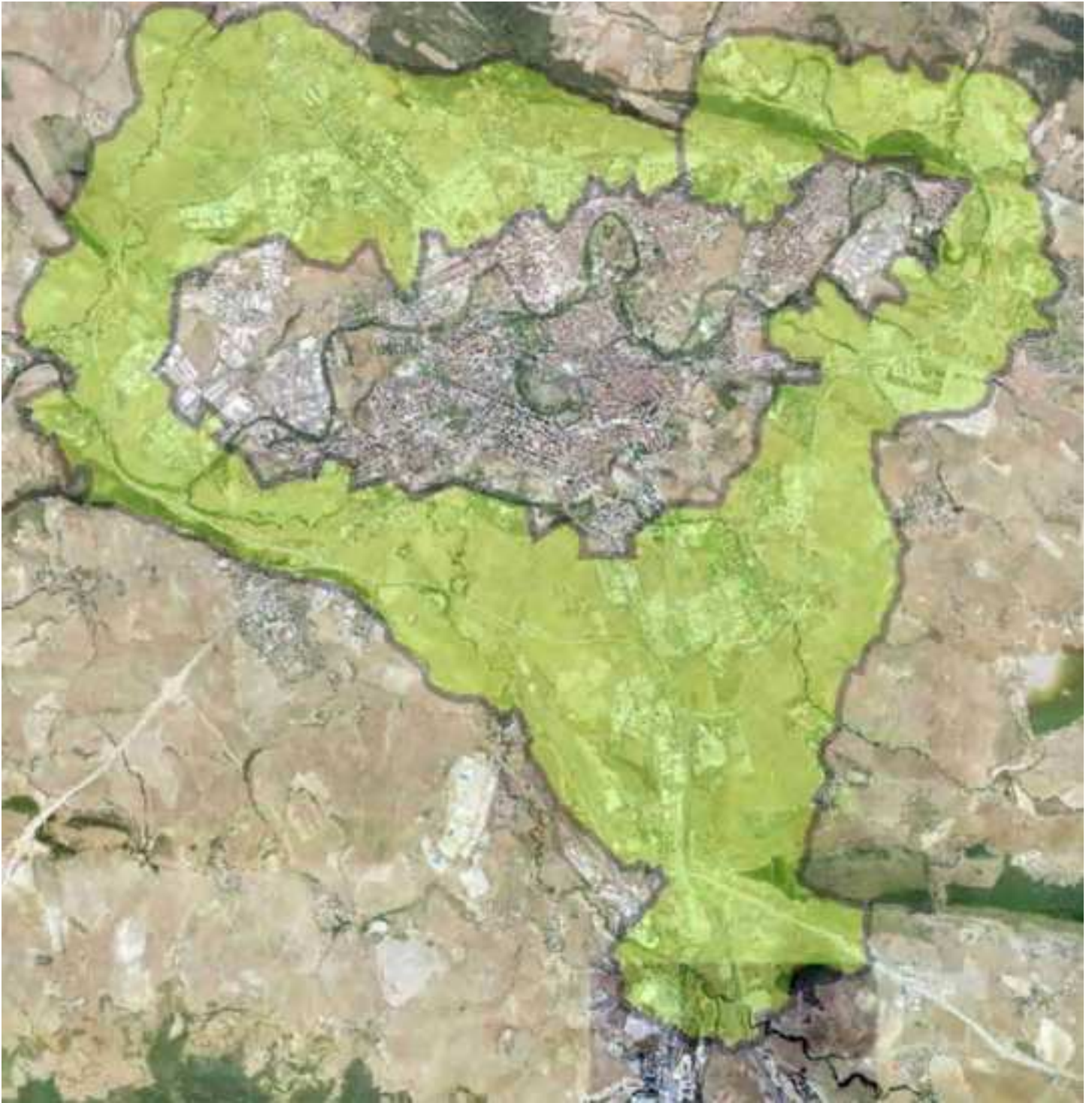
Table 1. Configuration of the parameters for both programs

Parameter	SP	CA
Discretization of the sources	Angular step = 2	Raster factor = 0.5
Maximum search radius of sources	2000 m	2000 m
Lateral diffraction allowed	Yes	No
Tolerance (maximum error)	0	0
Grid interpolation	1	No
Calculate points inside buildings	No	No
Building absorption	0.1 (=0.5 dB)	0.1 (=0.5 dB)
Ground absorption	0.4 (mean value)	0.4 (mean value)
Correction limit by diffraction	25 dB	25 dB
Reflection order	1	1
Reflection depth	2	Infinite (default)
Max. search radius of reflecting surfaces	Not available	100 m
Min. dist. receiver-reflector and interpolation (for reflection)	Not available	1 m. Interpolation to 1 m.
Max. dist. source-receiver and interpolation (for reflection)	Not available	1000 m. Interpolation from 1000 m.

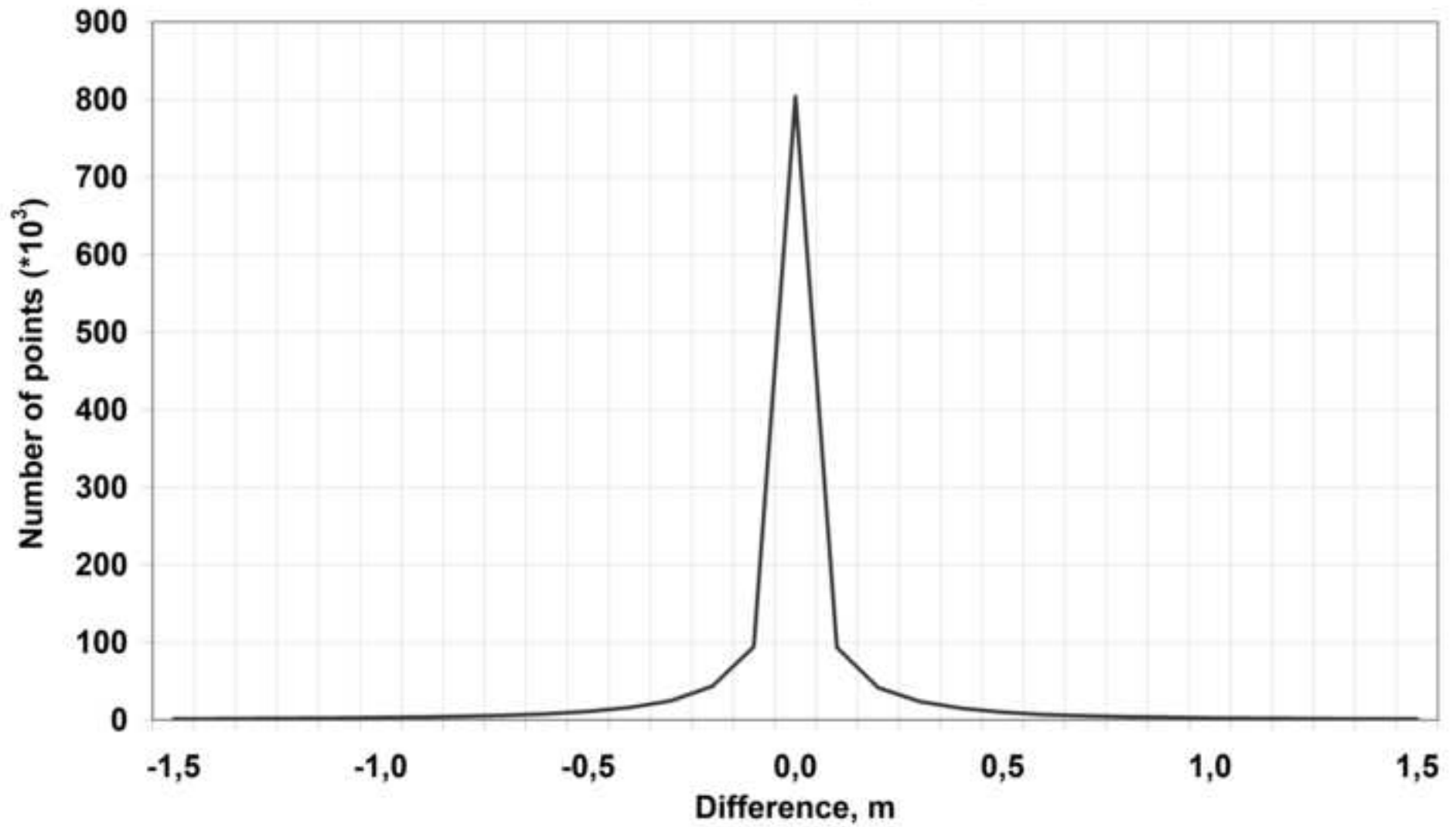
colour figure
[Click here to download high resolution image](#)



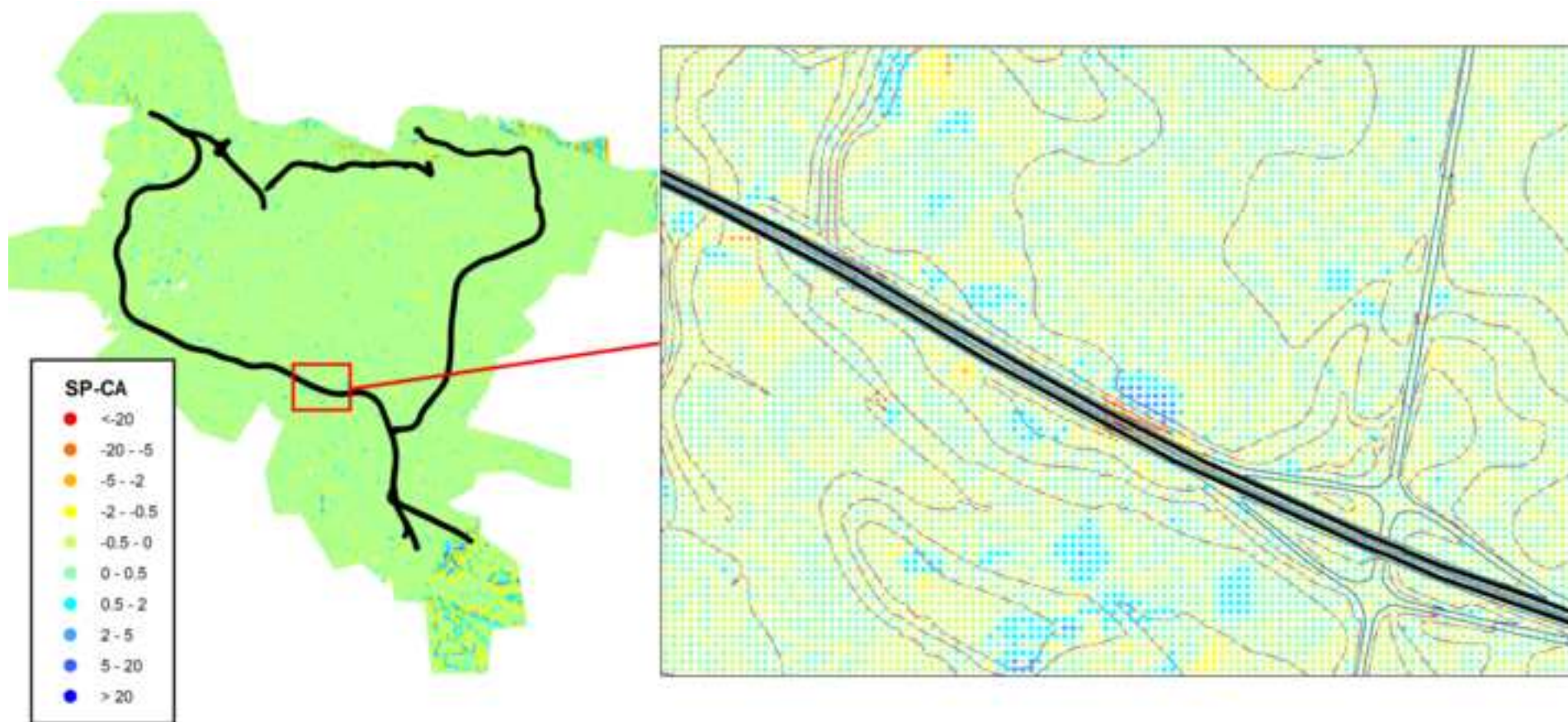
colour figure
[Click here to download high resolution image](#)



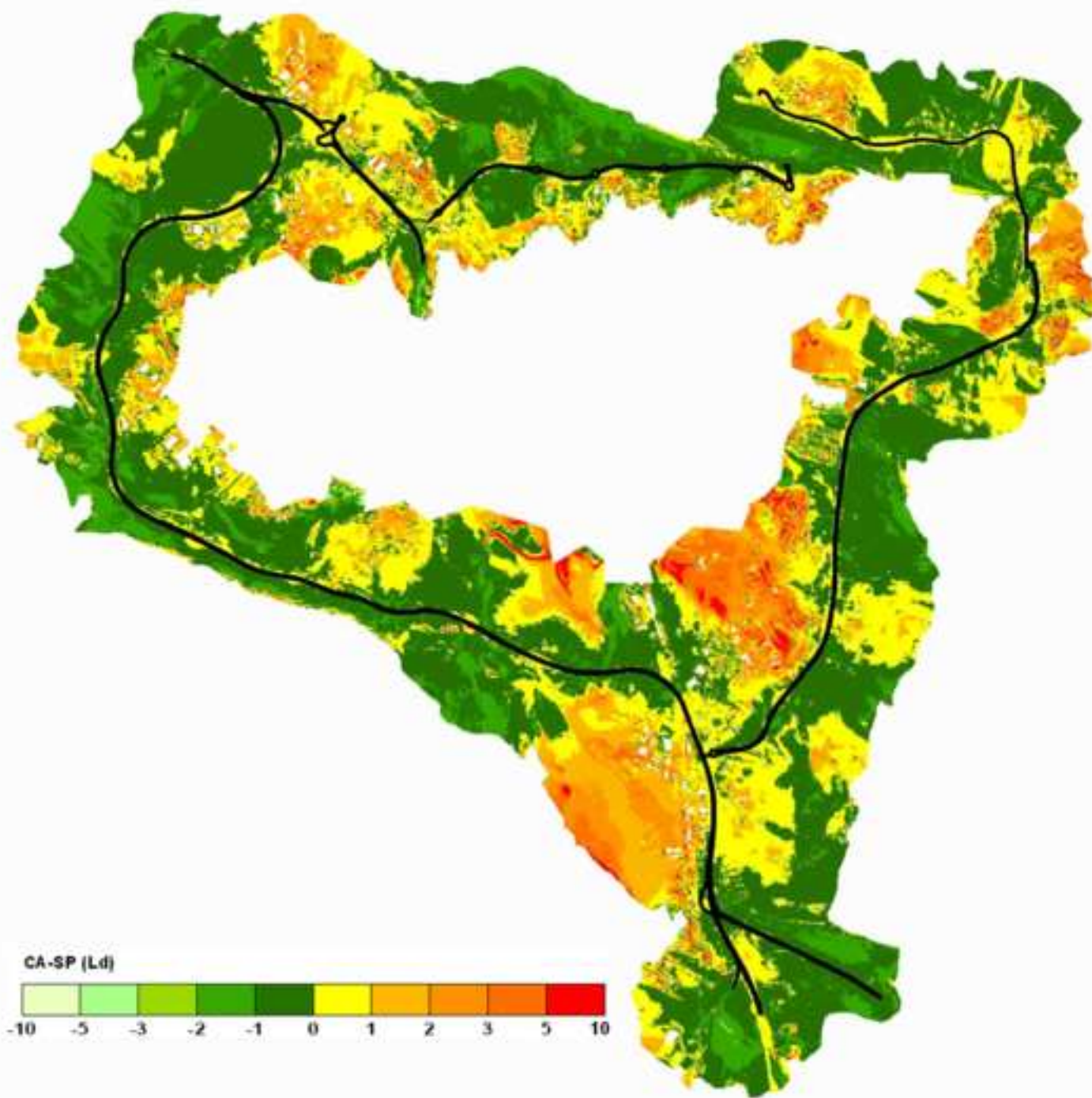
DTM differences (SP-CA)



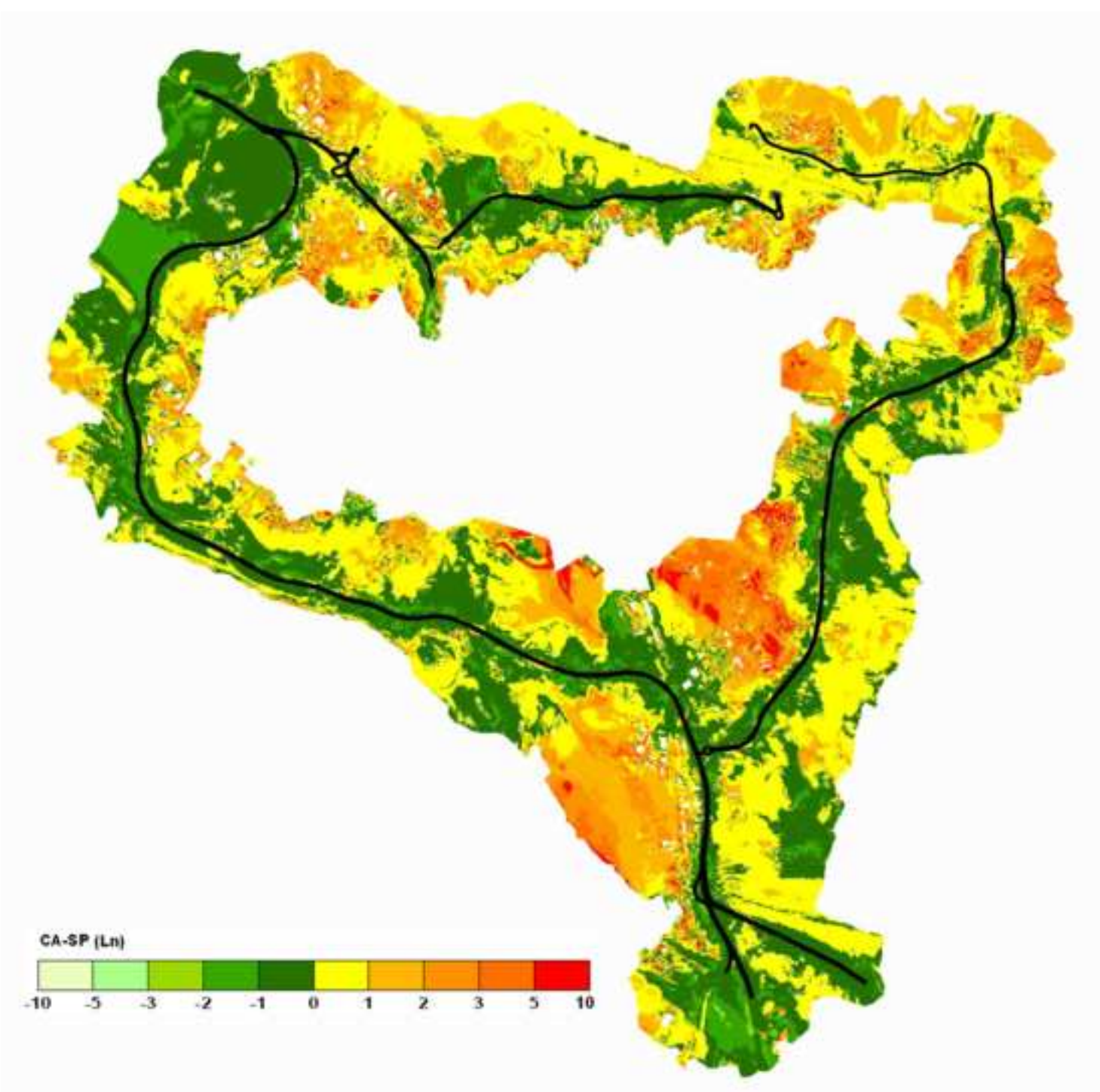
colour figure
[Click here to download high resolution image](#)

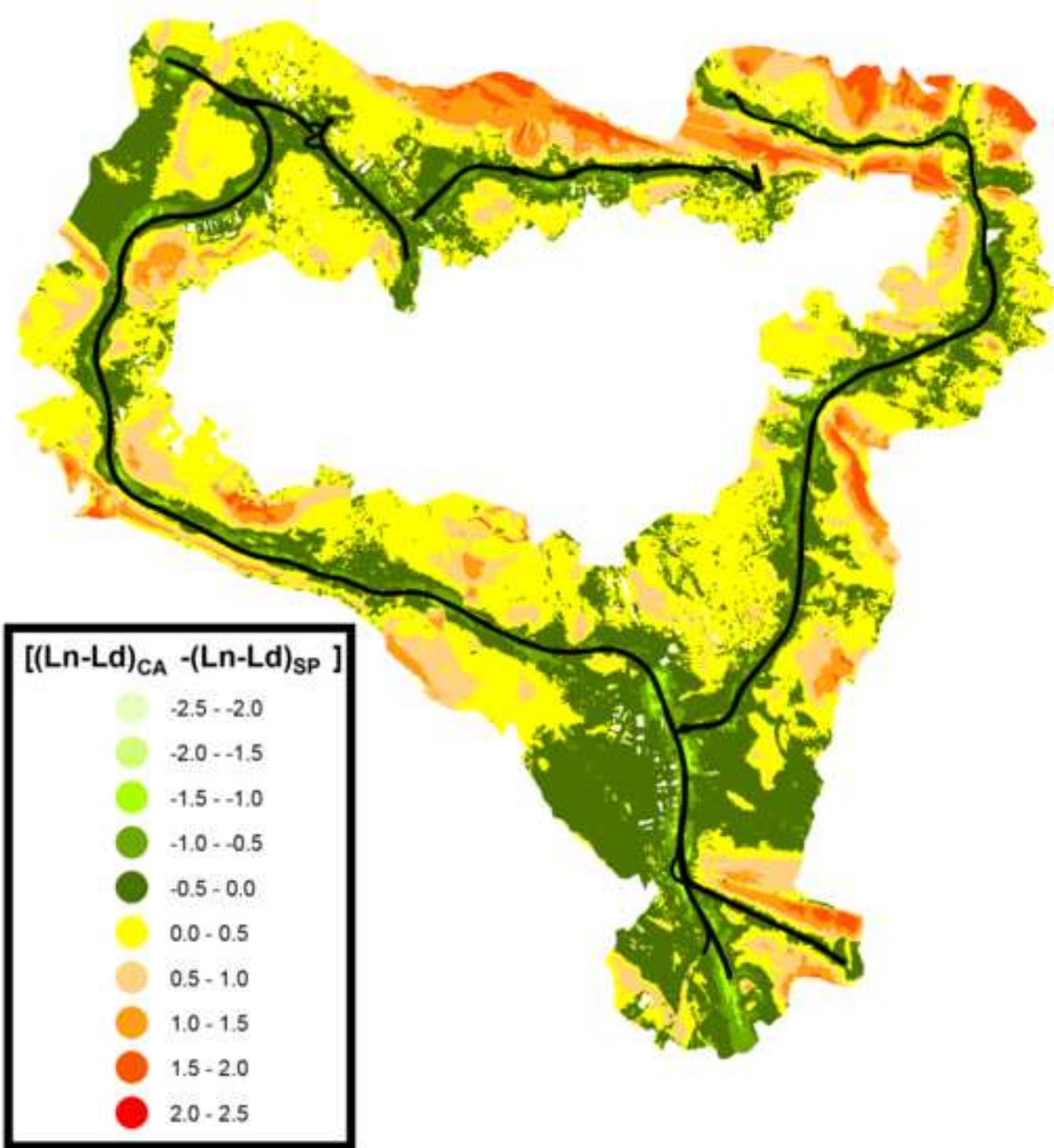


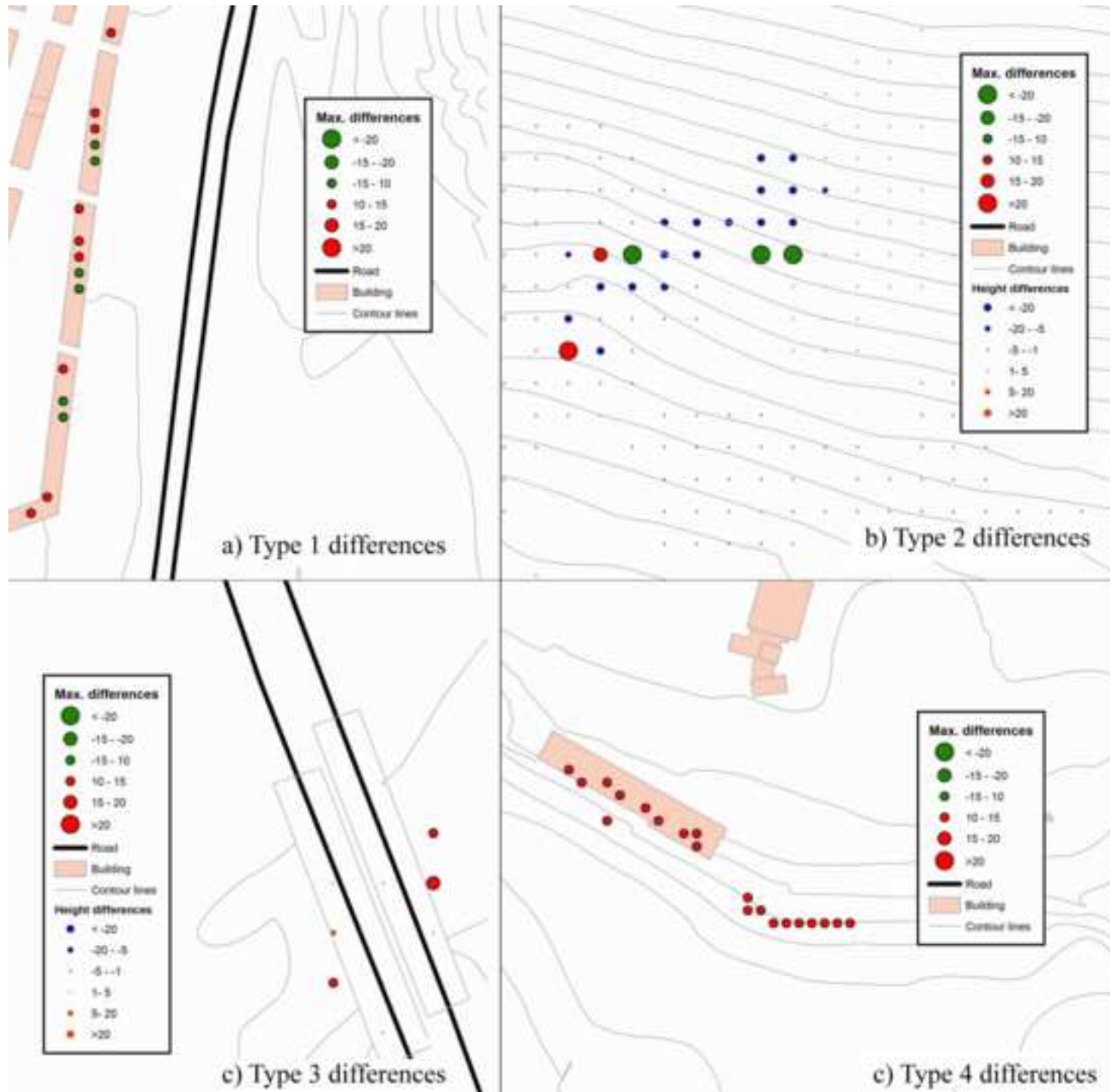
colour figure
[Click here to download high resolution image](#)

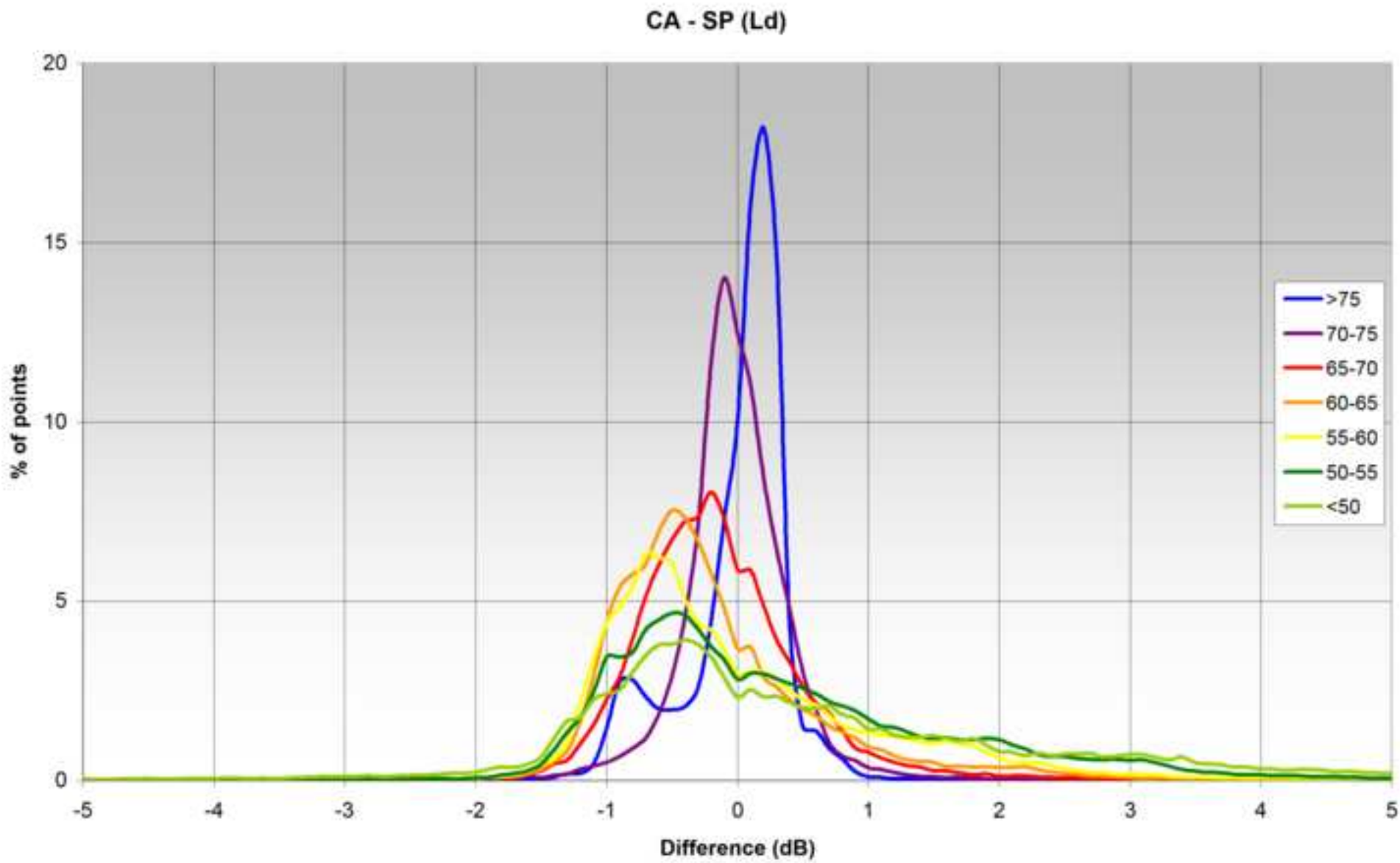


colour figure
[Click here to download high resolution image](#)



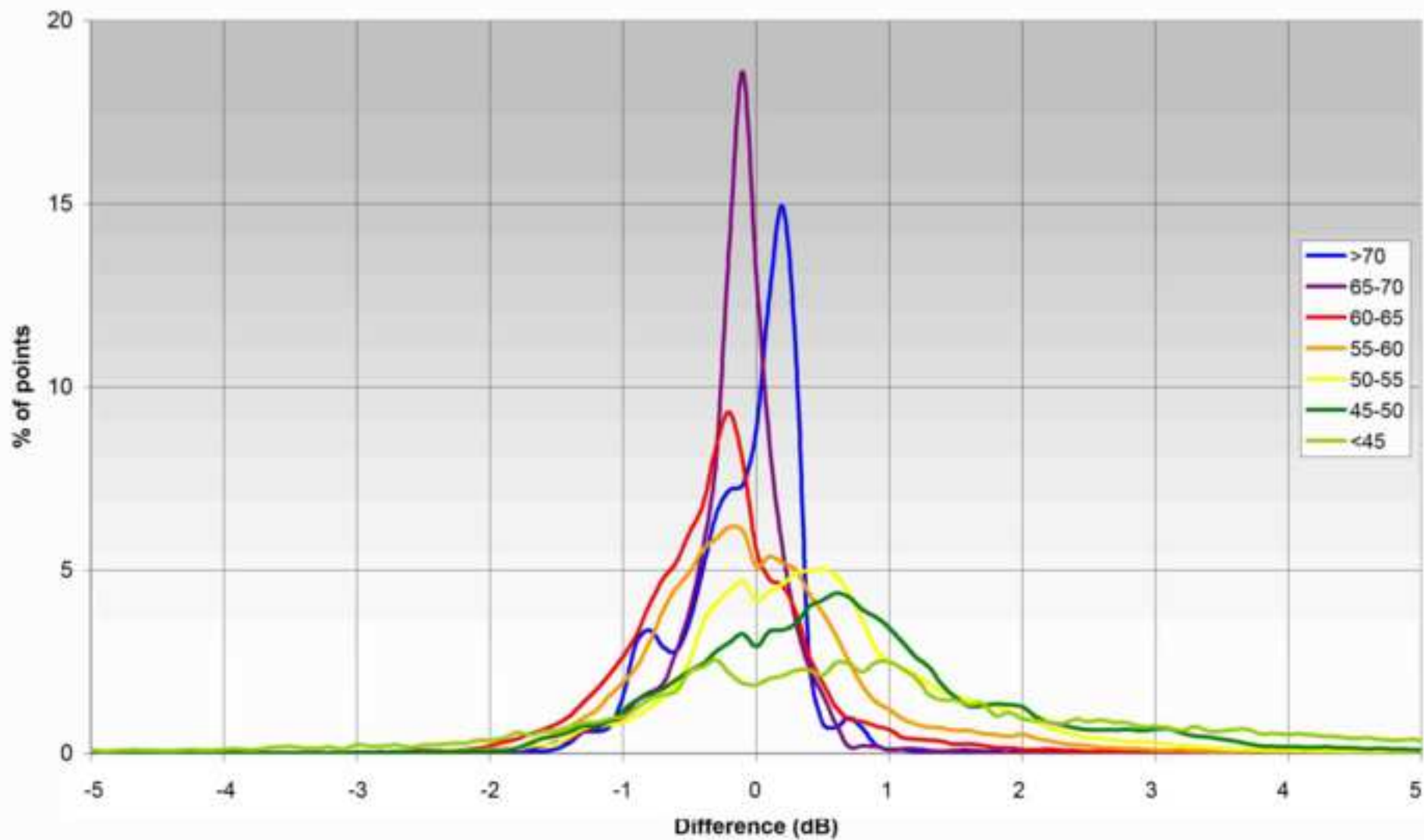






colour figure
[Click here to download high resolution image](#)

CA - SP (Ln)



Tables

Table 1. Configuration of the parameters for both programs

Parameter	SP	CA
Discretization of the sources	Angular step = 2	Raster factor = 0.5
Maximum search radius of sources	2000 m	2000 m
Lateral diffraction allowed	Yes	No
Tolerance (maximum error)	0	0
Grid interpolation	1	No
Calculate points inside buildings	No	No
Building absorption	0.1 (=0.5 dB)	0.1 (=0.5 dB)
Ground absorption	0.4 (mean value)	0.4 (mean value)
Correction limit by diffraction	25 dB	25 dB
Reflection order	1	1
Reflection depth	2	Infinite (default)
Max. search radius of reflecting surfaces	Not available	100 m
Min. dist. receiver-reflector and interpolation (for reflection)	Not available	1 m. Interpolation to 1 m.
Max. dist. source-receiver and interpolation (for reflection)	Not available	1000 m. Interpolation from 1000 m.