

Supplemental Table 1. Ethnic minority groups in Spain*

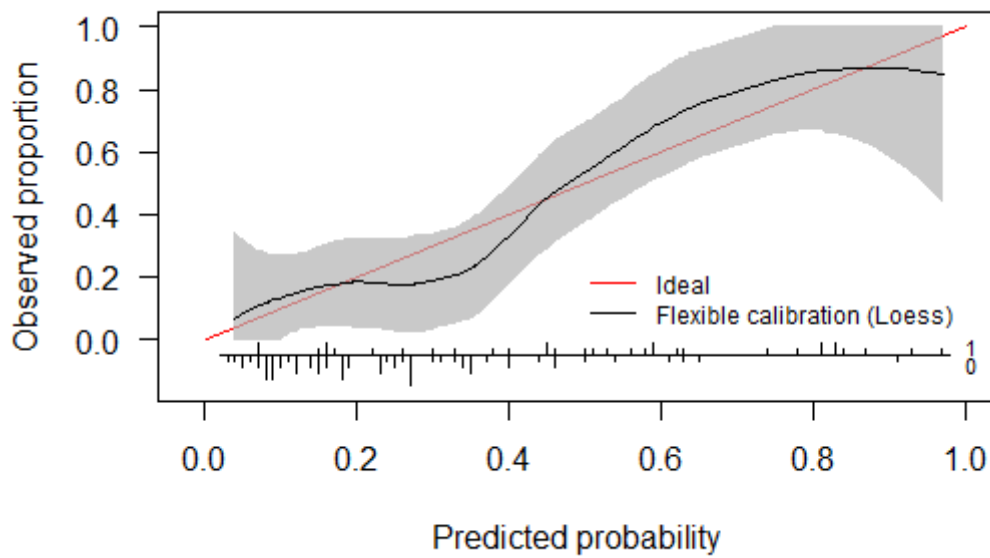
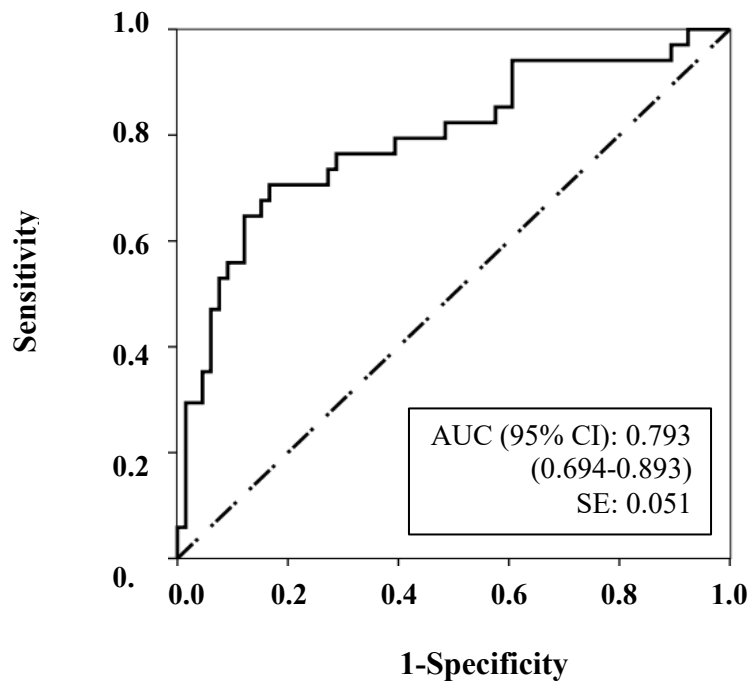
National ethnic minorities	Gypsies
Economic migrants	Latin Americans (South Americans and Central Americans) Eastern European (i.e., Romania, Bulgaria) North Africans Sub-Saharan Africans Chinese Arabian

*according to the European Commission against Racism and Intolerance. ECRI Report on Spain (fifth monitoring cycle),2018)

Supplemental Table 2. Prediction accuracy of the HEPAKID index.

Cut-off points	Sensitivity (%) (95% CI)	Specificity (%) (95% CI)	PPV (%) (95% CI)	NPV (%) (95% CI)	LR+ (95% CI)	LR- (95% CI)
Youden index (0.55): ≥ 41.7	68 (50-85)	87 (78-96)	74 (57-91)	83 (74-93)	5.3 (2.7-10.6)	0.4 (0.2-0.6)
≥ 25	82 (68-96)	62 (49-75)	53 (39-68)	86 (76-98)	2.2 (1.5-3.1)	0.3 (0.1-0.6)
≥ 35	71 (54-87)	79 (69-90)	65 (48-81)	83 (73-94)	3.4 (2.0-5.8)	0.4 (0.2-0.6)
≥ 45	62 (44-80)	87 (78-96)	72 (54-90)	81 (71-91)	4.9 (2.4-9.8)	0.4 (0.3-0.7)
≥ 55	47 (29-65)	92 (85-99)	76 (56-97)	76 (66-86)	5.9 (2.4-14.8)	0.6 (0.4-0.8)
≥ 65	35 (18-53)	97 (92-100)	86 (64-100)	74 (63-84)	11.1 (2.6-46.8)	0.7 (0.5-0.9)
≥ 75	24 (8-39)	98 (95-100)	89 (63-100)	70 (60-81)	15.0 (2.0-113.0)	0.8 (0.6-0.9)

PPV: positive predictive value; NPV: negative predictive value; LR+: positive likelihood ratio; LR-: negative likelihood ratio.



Supplemental Figure 1. Receiver operating characteristics curve (panel A) and calibration (panel B) of the HEPAKID index model without cardiorespiratory fitness data. AUC-ROC: area under receiver operating characteristics curve; CI: confidence interval; SE: standard error.

Supplemental Figure 2. Receiver operating characteristics curve (panel A) and calibration (panel B) of the ped-NAFLD score. AUC-ROC: area under receiver operating characteristics curve; CI: confidence interval; SE: standard error.

